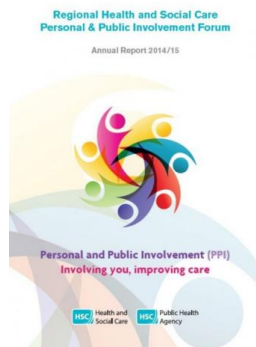


Monday, 01 February 2016

## Allied Health Professions and Personal and Public Involvement



The Regional HSC PPI Annual Report for 2014/15 provides an overview of the work of the Forum. The report provides an overview of the key strategic work areas and achievements for the year including the PPI Standards which were endorsed by the Department of Health, Social Services and Public Safety and launched in March 2015.

Personal and Public Involvement (PPI) is about the active and meaningful involvement of service users, carers and the public in Health and Social Care (HSC) and an essential component in the delivery of truly person-centred services. It is also a statutory duty. The PHA as part of its leadership responsibilities for PPI has established and chairs the Regional HSC PPI Forum which brings together all HSC organisations, working alongside service users and carers, to bring a focus on involvement.

## Details

Format

A4, 27 pages, pdf

Target group

Healthcare professionals and service users/carers

## Downloads

**Attachment**

**Size**

[Regional HSC PPI forum annual report 14-15 final.pdf](#)

2.99 MB

[Print](#)