

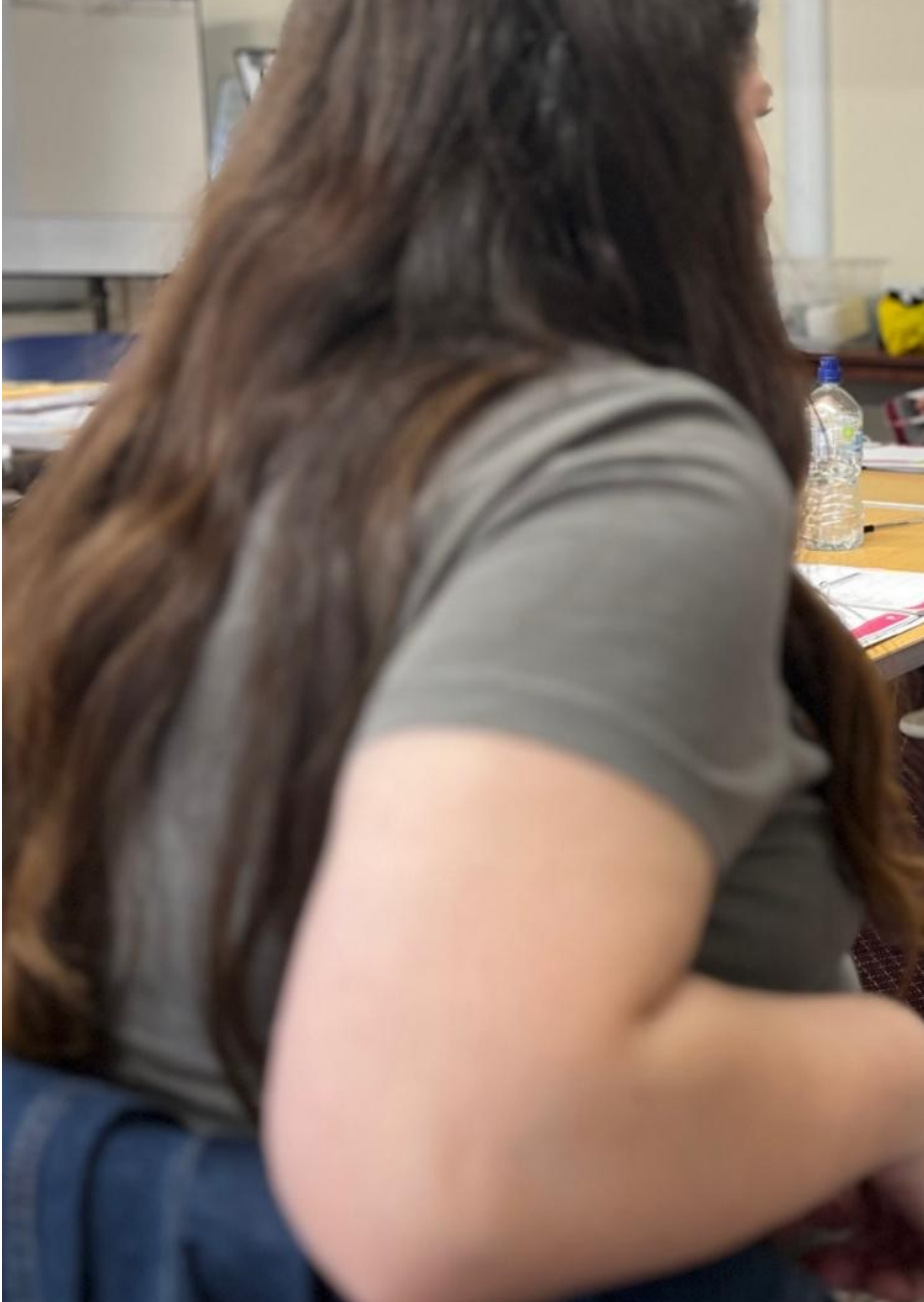


Public Health Agency
Routine Enquiry Into Domestic Abuse
Guidance for GPs, Health Visitors, Social Workers and Family Nurses on Telephone Enquiry

Public Health Agency
Routine Enquiry Into Domestic Abuse
Guidance for GPs, Health Visitors, Social Workers and Family Nurses on Telephone Enquiry







The safest place for your baby is in a moses basket or cot in the bedroom for the first six months, even during the day.

Never, ever fall asleep with your baby on an armchair or sofa.



Never, ever allow anyone who is not a qualified professional to perform a procedure on your baby.



your home this Christmas



Public Health
Agency



The Culture of Dying Matters

5-11 May 2025

[#TheCultureOfDyingMatters](#)



Sudden Infant Death

Never, ever fall asleep with your baby on an armchair or sofa.

X

Never, ever allow anyone who has been smoking, drinking or taking drugs (including medication) to share a bed with your baby.

X

The safest place for baby to sleep is on their back in a Moses basket or cot in your room for the first six months.





Pagination

- Page 1
- [Next page >>](#)

[View PDF](#)