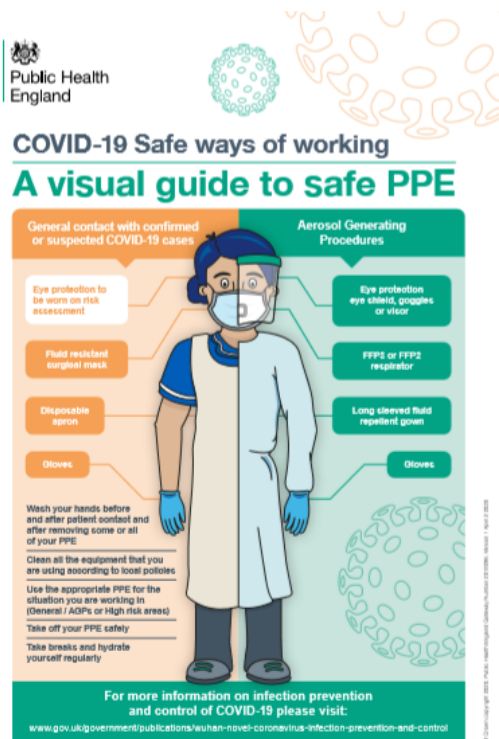


Leaders from a range of medical and nursing professional groups have published new guidance on personal protective equipment (PPE) for health and social care staff who are likely to come into contact with patients with COVID-19.

The guidance has been agreed by the four UK Chief Medical Officers, Chief Nursing Officers and Chief Dental Officers in the UK and endorsed by the Academy of Medical Royal Colleges and is applicable in all parts of the UK.



The guidance can be found here:

- [Visual guide to safe PPE](#)
- [PPE Guidance Update](#)
- [Recommended PPE for primary outpatient and community care](#)
- [Recommended PPE for healthcare workers secondary care](#)
- [Additional considerations of COVID-19 poster](#)

Further guidance on PPE is available here:

- [Protect your skin when using PPE](#)
- [Safe use of visors poster](#)

Test ✓ Trace ✓ Protect ✓



[Print](#)