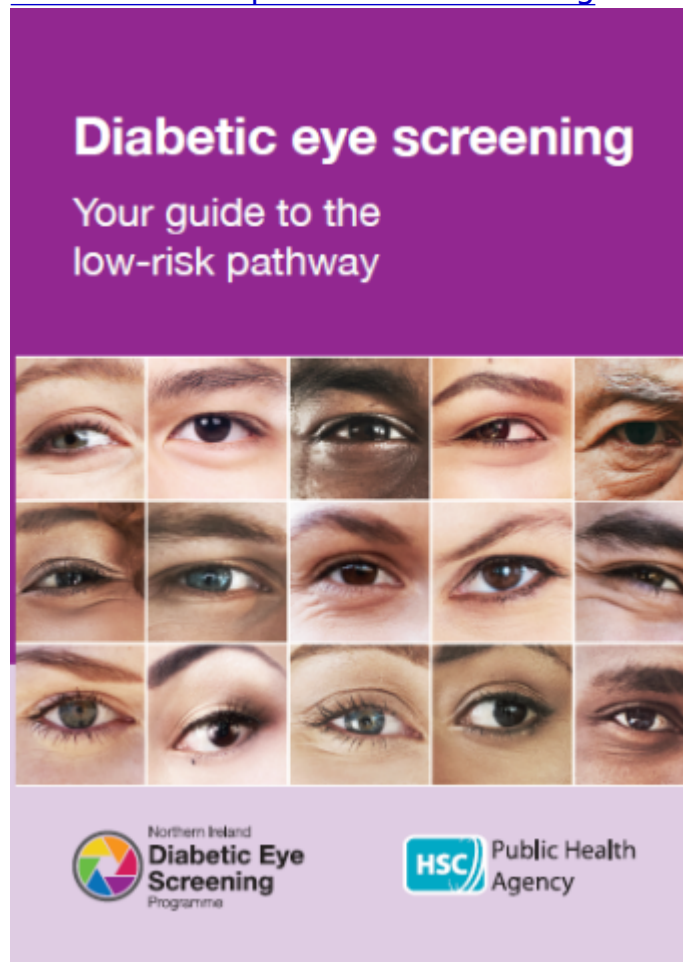


Tuesday, 28 November 2023

[Service Development and Screening](#)



This leaflet outlines the 'low-risk pathway' for those deemed at low risk of developing diabetic retinopathy between screens and can move to screening every two years instead of annually.

Details

Format

A5 6 pages

Target group

Those moving to screening every two years

Downloads

Attachment

Size

[DESP Low risk pathway 2023.pdf](#) 456.6 KB

Tags

- [DESP](#)
- [diabetic eye screening](#)
- [retinopathy](#)
- [low-risk](#)

[Print](#)