

COVID-19 (coronavirus)

If you have been to **China, Thailand, Japan, Republic of Korea, Hong Kong, Taiwan, Singapore, Malaysia, or Macau** in the last **14 days** and have any of these symptoms:



Cough



Fever



Difficulty breathing

- If you are registered with a GP in Northern Ireland, please contact your GP **BY PHONE**.
- If you are **NOT** registered with a GP in Northern Ireland, please contact your local Emergency Department by checking pha.site/emergency-healthcare-nidirect
- **Please do NOT attend the surgery or hospital without phoning in advance.**
- If it is a medical emergency, call 999 and inform the call handler of your recent travel.

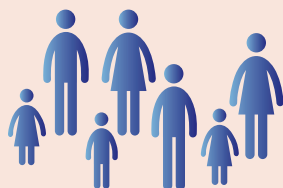
If you have been to Hubei Province (including Wuhan) in the last 14 days and have no symptoms, please return home, contact the helpline on 0300 200 7885 and follow the advice below.



Stay indoors and avoid contact with others as much as possible for 14 days after you arrive.



Do not go to work, school or public areas



Avoid visitors in your home



Do not use public transport or taxis

