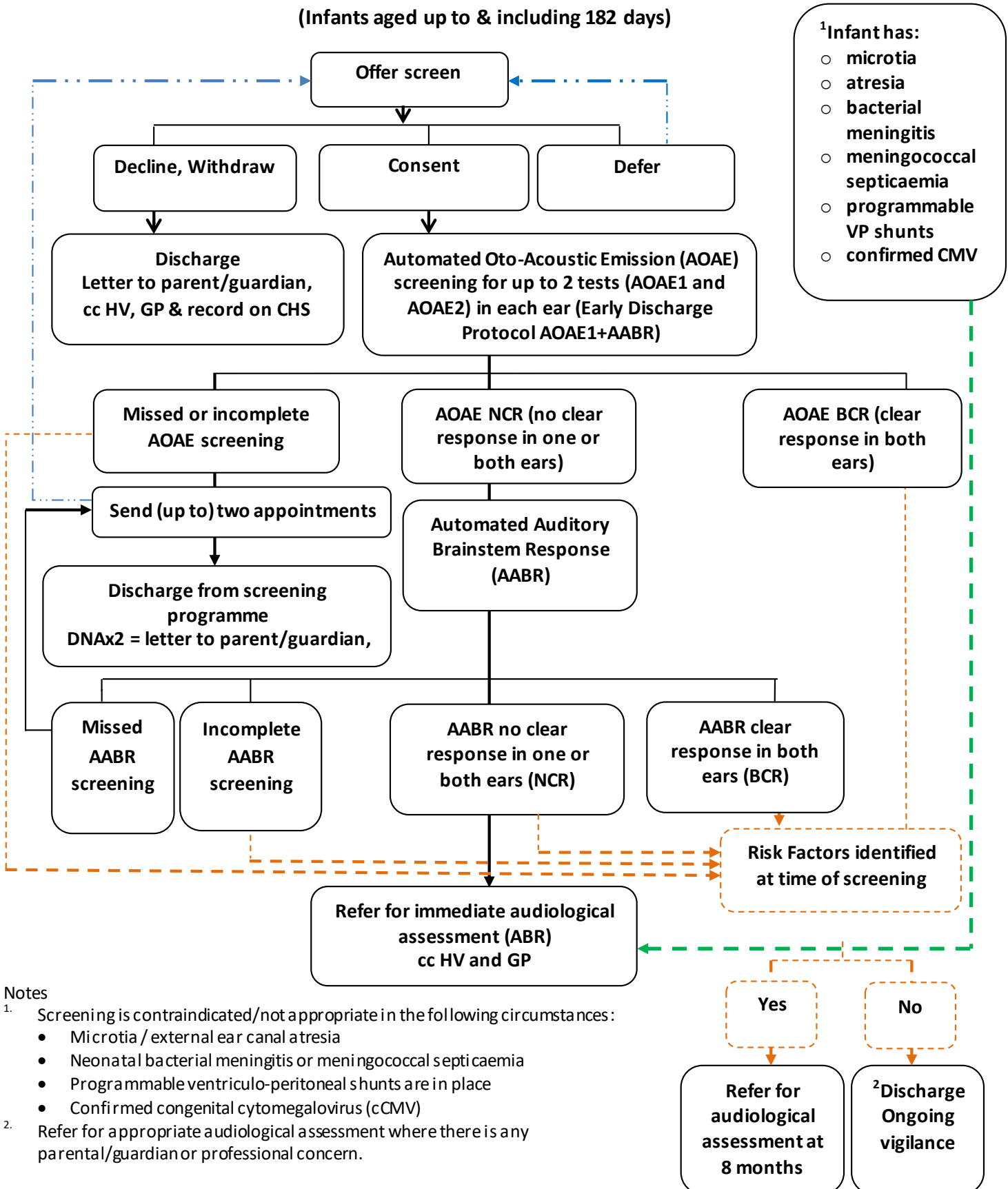


**Well Baby/Early Discharge Protocol/Patient Journey  
(Infants aged up to & including 182 days)**



**Notes**

1. Screening is contraindicated/not appropriate in the following circumstances:

- Microtia / external ear canal atresia
- Neonatal bacterial meningitis or meningococcal septicaemia
- Programmable ventriculo-peritoneal shunts are in place
- Confirmed congenital cytomegalovirus (cCMV)

2. Refer for appropriate audiological assessment where there is any parental/guardian or professional concern.