

Ezaminasaun ba Tee-oan instrusan ba ekipamentu teste nian Ita sei preziza...

buat ne'ebé uza atu tau Ita-nia tee hanesan fatin tuan ne'ebé moos.



ekipamentu teste nian (aneksu)

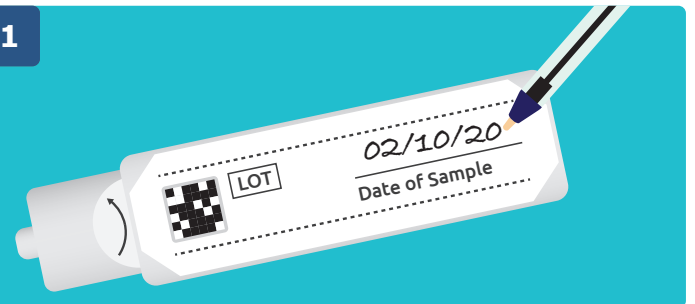
kaneta

ka papel ijiéniku.

Importante Liu

Hakerek data wainhira Ita hola amostra ne'e iha ekipamentu teste ne'e se lae ami labele atu ezamina.

1

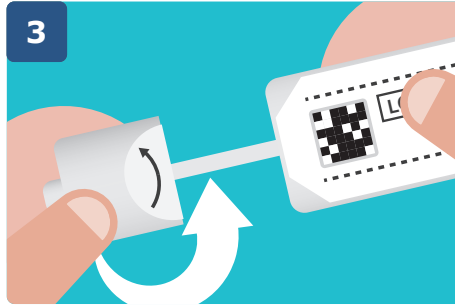


2



Hatuur fatin mamuk ida ka papel ijiéniku atu foti Ita-nia tee. Labele husik tee kona iha toalete ka bee.

3



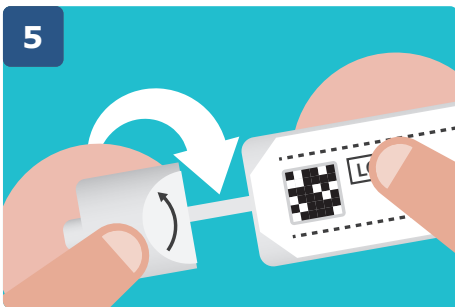
Loke tubu nia matan atu hasai ai-oan iha laran.

4



Hatama ai-oan nia tutun ba iha ita-nia tee. Enxe de'it riskus ki'ik rua iha nia rohan - labele enxe nakonu liu.

5



Hatama fali ai-oan ne'e ba tubu (nia fatin). Taka tubu ne'e hodi dulas metin nia matan.

6



Se Ita uza fatin mamuk karik entaun tau iha plástiku ida no soe iha lisu iha liur. Keta haluha atu fase Ita-nia liman.

7



Wainhira kompleta ona, tau ekipamentu teste ne'e iha envelope mahar ne'ebé fornese ona no manda lalais ba ami liu husi korreiu.

Liña apoiu Gratuitu: 0300 015 2514 (tarifa lokal)
www.publichealth.hscni.net

(Relay UK 18001 0800 015 2514
ba sira ne'ebé tilun-diuk ka iha defisiensia atu kualia)

Ba informasaun barak liu tan vizita:
www.nidirect.gov.uk/articles/bowel-cancer-screening



Public Health Agency

Public Health Agency
12-22 Linenhall Street, Belfast BT2 8BS.
Tel: 0300 555 0114 (local rate).
www.publichealth.hscni.net

Find us on:

