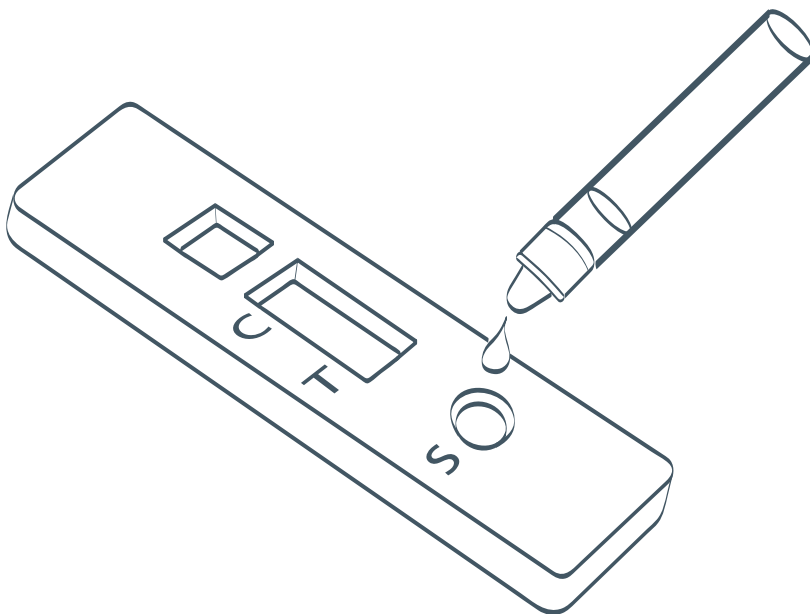


A guide for healthcare staff self-testing for coronavirus using a Lateral Flow Device (LFD)



This guide will help you remain well at work and keep your patients safe.
This test is suitable for healthcare workers.

About this test kit

This test is part of the HSC's response to the pandemic and its commitment to controlling infection and supporting our healthcare staff. This instruction booklet only refers to the Innova SARS-CoV-2 Antigen Rapid Qualitative Test in packs of 25 tests. Please follow this information leaflet that has been specifically designed to support this, rather than the technical instructions that are included in the box from the original manufacturer.

Overview

Here is a quick checklist for how to use the COVID-19 LFD tests. It is really important that you follow these steps in the correct order.

You should test yourself twice a week, every 3 to 4 days, to fit your shift pattern – for example, every Monday and Thursday or Wednesday and Sunday.

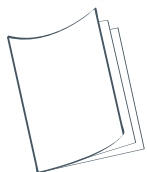
- Prepare your test area and unpack your equipment
- Take your swab sample (nasal swab only)
- Process your sample and wait 30 minutes
- Read your result
- Report your result
- Safely dispose of test equipment

Remember, store the test kit at room temperature – not in direct sunlight and not in a fridge or freezer. Keep the test kit away from children.

! If you receive a positive test, you must immediately report the result to your organisation, either via your occupational health department, line manager or as per local guidelines.

You and your household should self-isolate according to public health guidelines. As of 5 January 2022, you no longer need a PCR test to confirm your positive lateral flow test result. This is being kept under review. See NI Direct for further guidance:
www.nidirect.gov.uk/articles/coronavirus-covid-19-self-isolating-and-close-contacts

Before you start



Read the instructions carefully. Taking the test may feel a little uncomfortable and unusual for most people.

You can see a demonstration of how to take the test by watching the video on this webpage: <http://pha.site/LFDtest>



Wash your hands thoroughly for 20 seconds, using soap and warm water. This is so that you do not contaminate the test kit. Now dry your hands.



Clean and dry a flat surface, where you will take the test. Unpack the sealed test equipment for one test and place onto the clean flat surface.

Check your contents. Ensure that the test device (called 'antigen test cartridge'), swab and extraction solution are not damaged, broken or out of date. Use the test kit checklist to make sure you have everything. Use a clean, one inch deep lid or other small container (e.g. clean egg cup) to keep the extraction tube upright and prevent spillage.



☐ Nozzle cap



☐ Extraction buffer bottle



☐ Swab, inside sealed wrapper



☐ Extraction tube



☐ Rapid test strip

Make a note of the lot number on the Record of Testing sheet at the back of this instruction guide. You can find the lot number on the outer package of the device.

Something damaged/broken/missing? If you have difficulties using the kit, if something breaks or is damaged in use or if you have concerns about the performance of the test, report these issues to the HSC organisation that provided you with the kit. Any problems or concerns with this device can also be reported to MHRA <https://coronavirus-yellowcard.mhra.gov.uk/about>

Prepare your test

1



Gently blow your nose into a tissue to get rid of excess mucus.

2



Wash and dry your hands again (or use sanitiser if this is available).

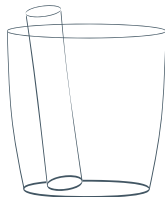
3



Soft tip Handle

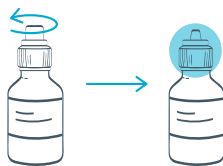
Check the swab in the sealed wrapper in front of you. Identify the soft, fabric tip of the swab.

4



Place the extraction tube in a small cup to keep it upright.

5



Unscrew the extraction buffer pot.

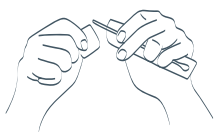
6



Place 6 drops only of the extraction buffer into the extraction tube. Try to avoid touching the tube with the bottle. Reseal the extraction buffer for future use.

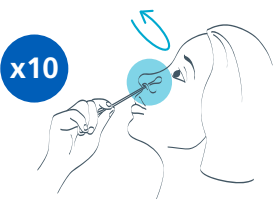
Take your swab sample

7



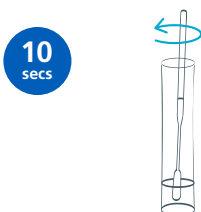
Open the package and gently take out the swab. Do not touch the fabric end of the swab.

8



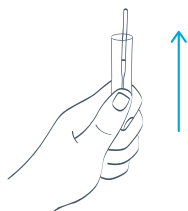
Put the swab gently into one nostril, you may feel a slight resistance (insert about 1.5cm or about half an inch). Roll the swab 10 times slowly along the inside of the nostril. Remove the swab and repeat 10 times in the other nostril.

9



Now put the fabric end of the swab into the bottom of the extraction tube. Press the swab head against the edge of the tube with force, while rotating the swab around the tube for 10 seconds to squeeze as much fluid out as possible.

10



Take out the swab while squeezing the tube and fabric end of the swab. Place the swab back into the wrapper and dispose of it at home in your household rubbish bin.

11



Press the nozzle cap tightly on to the tube to avoid any leaks.

12



Turn the tube upside down and lightly squeeze two drops onto the specimen well.

13



Place the Rapid Test Strip on a flat surface for 30 minutes. Set a clock, timer, or watch and wait 30 minutes to read the results. Do not read your results until the 30 minute mark.

Reading your results

Leave your test for the full development time to get an accurate result. Do not read your results until **30 minutes**. If the test device is left to develop longer you may receive a false positive result and you will need to repeat the test.



Positive result

Two lines – even faint lines – indicate the test is positive.



Negative result

This indicates the test is negative.



Invalid result

The test has failed and should be retaken.

Reporting your results

! If your test result is positive

You must immediately report your positive test results to your organisation – either via your occupational health department, line manager or as per local guidelines. You and your household should self-isolate according to public health guidelines. As of 5 January 2022, you no longer need a PCR test to confirm your positive lateral flow test result. This is being kept under review. See NI Direct for further guidance: www.nidirect.gov.uk/articles/coronavirus-covid-19-self-isolating-and-close-contacts

You must also record your positive test results via the portal at: <https://www.gov.uk/report-covid19-result>

If your test result is negative: Record the information via the portal at: <https://www.gov.uk/report-covid19-result> If you have coronavirus (COVID-19) symptoms please refer to PHA guidance online www.pha.site/coronavirus as this test may miss some positive cases.

If your test result is invalid: Record the information via the portal at: <https://www.gov.uk/report-covid19-result> Repeat the test with a new test kit.

Disposing of your test

Carefully dispose of the test device and equipment in your household rubbish.

Disposal advice may be subject to change based upon future waste disposal guidance.

Need more help?

If you need more help using the LFD test kit or can't perform the test contact the HSC organisation that provided you with the test kit.

Coronavirus guidance and help: If you have coronavirus (COVID-19) symptoms or have contracted coronavirus (COVID-19), please refer to PHA guidance online www.pha.site/coronavirus

You can check your symptoms using either the COVIDCareNI app, available at <https://covid-19.hscni.net/covidcare-ni-mobile-app/> or the online symptom checker at <https://check.covid-19.hscni.net/SymptomChecker/Introduction>

If you have symptoms of coronavirus (COVID-19) and your condition gets worse, or you do not get better after 7 days, you can ring NHS 111 for information or advice and they will help you decide if you need to contact your GP. For a medical emergency dial 999.

Do not delay getting help if you are worried. Trust your instincts.

We are collecting safety and performance data during the roll out of COVID-19 testing initiatives. Problems with this device can be reported directly to MHRA <https://coronavirus-yellowcard.mhra.gov.uk/>

This leaflet was adapted for Northern Ireland with permission from Health Education England.

Record of testing sheet

Your results should be reported via the portal at: <https://www.gov.uk/report-covid19-result> - however you may also find it useful to keep a record of them here.

Name: Job Role:

Staff number (if known): Gender: Date of birth:

Department / Ward: Home Postcode:

	Date of test/s performed	Time test performed	Lot number of test strip	Result (recorded as positive, negative and invalid)	If invalid confirmation that a repeat test has been performed	Comments (e.g. problems or performance in use of device)
1						
2						
3						
4						
5						
6						
7						
8						
9						
10						
11						
12						
13						
14						
15						
16						
17						
18						
19						
20						
21						
22						
23						
24						
25						