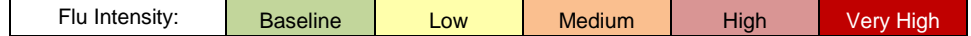


# Influenza

## Weekly Surveillance Bulletin

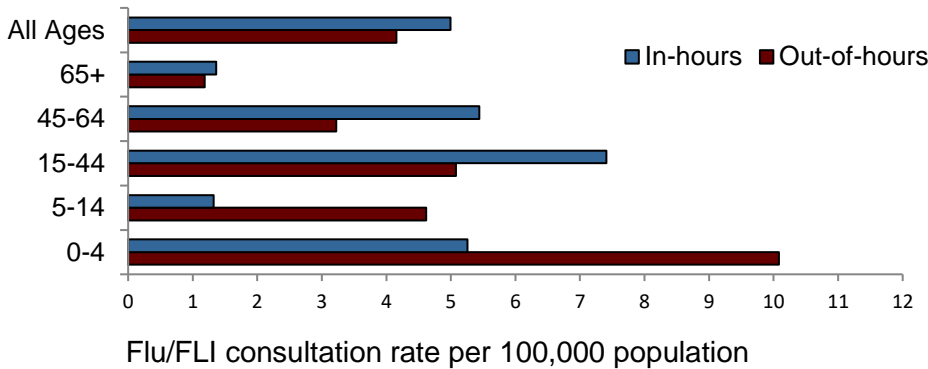
Week 48 (28 November — 04 December 2022)

### Community Activity

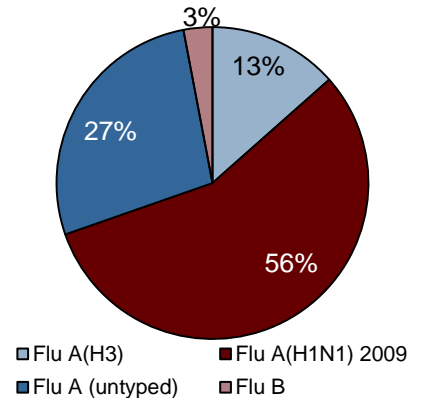


Week	October					November				December					January					February				March			April			May			
	40	41	42	43	44	45	46	47	48	49	50	51	52	53	1	2	3	4	5	6	7	8	9	10	11	12	13	14	15	16	17	18	19
2022/23																																	
2021/22																																	
2020/21																																	

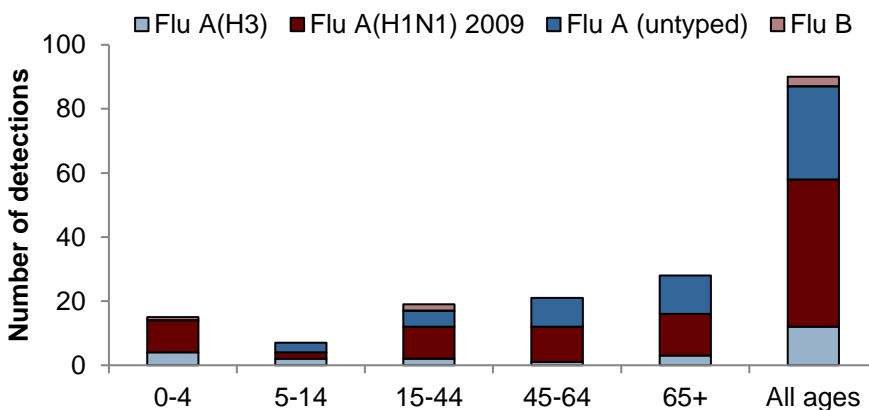
### GP consultation rates for 'flu/flu-like-illness' ('flu/FLI') (28 November — 04 December 2022)



### Circulating strains this season to date



### Number of hospital samples with confirmed flu (28 November – 04 December 2022)



### Respiratory outbreaks (28 Nov – 04 Dec 2022)

2

To date there have been six flu outbreaks and one RSV outbreak reported this season.

### Influenza vaccine uptake 2022/23

Vaccine uptake rates for 2022/23 will be available later in the season.

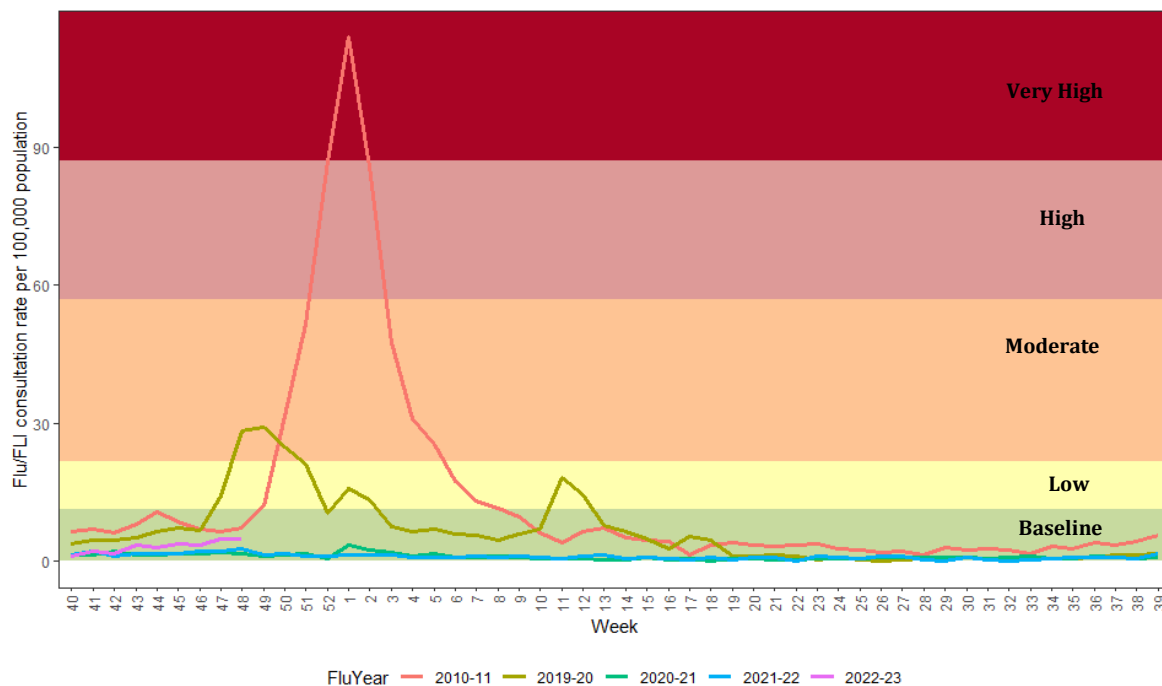
### COVID-19 Epidemiological Bulletin

The weekly report outlining the recent epidemiology of COVID-19 disease in Northern Ireland is available to download [here](#).

## Note

It is important to note that the influenza surveillance data contained within this report should be interpreted with caution due to the impact of the COVID-19 pandemic. This is true not only for the early stages of the pandemic in Northern Ireland from March 2020 (when there was an increase in the use of influenza-like illness (ILI) codes), but also when in making comparisons between different influenza seasons. Interpretation of data from week 10 (March), 2020 onwards should consider the implementation of episodic COVID-19 control measures. These include, but are not limited to, the wearing of face masks, hand hygiene practices, social and physical distancing measures, national lockdowns and travel restrictions. Changes in both health-seeking behaviours (including patient access to GP services) and in testing practices (including the introduction of laboratory multiplex testing for SARS-CoV/Flu/RSV in 2021) should also be considered.

### Consultation rates for influenza or influenza-like-illness ('flu/FLI')



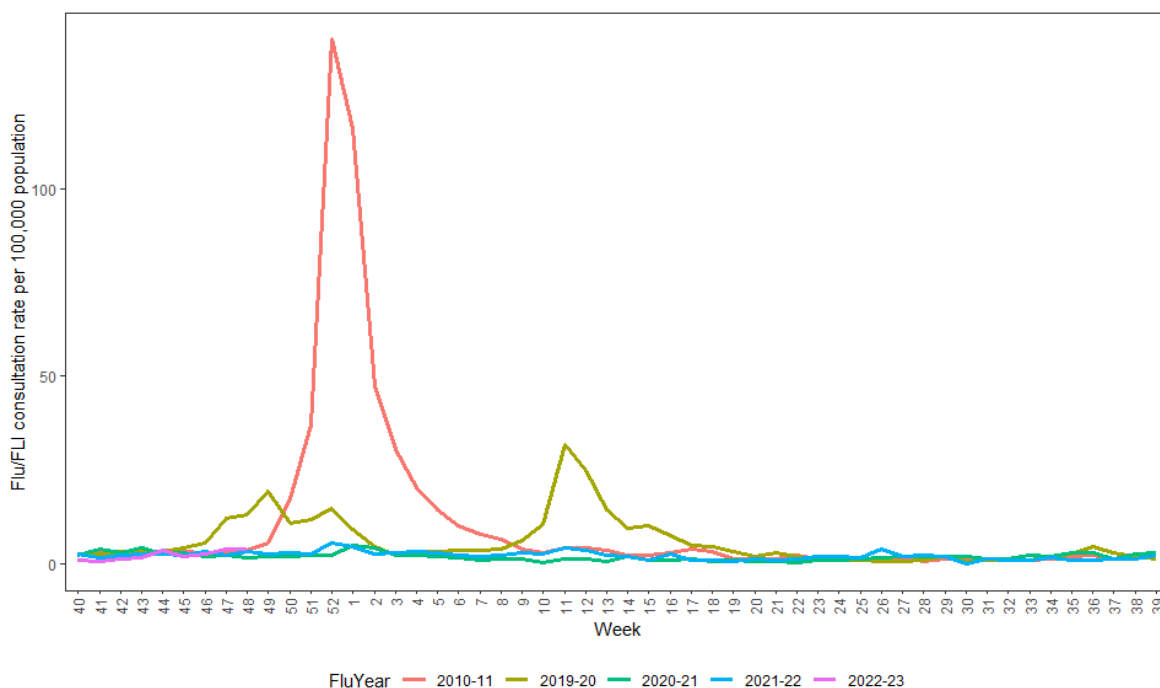
**Figure 1. Northern Ireland GP consultation rates for ‘flu/FLI’ 2010/11 and 2019/20 – 2022/23**

The baseline MEM threshold for Northern Ireland is 11.3 per 100,000 population for 2022-23. Low activity is 11.3 to <21.8, moderate activity 21.8 to <57.0, high activity 57.0 to <87.1 and very high activity is >87.1.

#### Comment

The GP flu/FLI consultation rate during week 48 was 5.0 per 100,000 population. This is slightly higher than week 47 (4.9 per 100,000) and higher than the same period in 2021-22 (2.8 per 100,000). Activity remains below the baseline threshold for Northern Ireland (11.3 per 100,000) (Figure 1).

Flu/FLI consultation rates were highest in 15-44 year olds in week 48 at 7.4 per 100,000 population. Rates are higher in all age groups with the exception of 65+ year olds when compared to the same period in 2021-22.



**Figure 2. Northern Ireland Out-of-Hours (OOH) consultation rates for ‘flu/FLI’ 2010/11 and 2019/20 – 2022/23**

**Comment**

The Flu/FLI consultation rate in Primary Care Out-of-Hours (OOH) Centres was 4.2 per 100,000 population in week 48. This is higher than week 47 (4.0 per 100,000) and higher than the same period in 2021-22 (3.5 per 100,000) (Figure 2).

In week 48 the percentage of calls to an OOH Centre due to flu/FLI was 0.61%. This is lower than the previous week (0.72% in week 47) but higher when compared to the same period in 2021-22 (0.56% in week 47).

Rates were highest in those aged 0-4 years in week 48 (10.1 per 100,000 population). In comparison to week 48, 2021-22, consultation rates were higher in 0-4, 5-14 and 15-44 year olds but lower in the 45-64 and 65+ age groups.

## Virology

**Table 1. Virus activity in Northern Ireland by source, week 48, 2022-23**

Source	Specimens tested	Flu A(H3)	Flu A(H1N1)	Flu A (untyped)	Flu B	Total Influenza Positive	% Influenza Positive	RSV
Sentinel	4	0	0	0	0	0	0.0	1
Non-sentinel	1671	12	46	29	3	90	5.4	41
Total	1675	12	46	29	3	90	5.4	42

**Table 2. Cumulative virus activity from all sources by age group, weeks 40-48, 2022-23**

Age Group	Flu A(H3)	Flu A(H1N1)	Flu A (untyped)	Flu B	Total Influenza Positive	RSV
0-4	16	40	8	7	71	476
5-14	5	14	8	0	27	25
15-64	24	122	57	4	207	78
65+	18	87	55	3	163	92
Unknown	0	0	0	0	0	0
All ages	63	263	128	14	468	671

**Table 3. Cumulative virus activity by source and age group, weeks 40-48, 2022-23**

Source	Age Group	Flu A(H3)	Flu A(H1N1)	Flu A (untyped)	Flu B	Total Influenza Positive	RSV
Sentinel	0-4	0	0	0	0	0	0
	5-14	0	0	0	0	0	0
	15-64	0	0	0	0	0	2
	65+	0	0	0	0	0	0
	Unknown	0	0	0	0	0	0
	All ages	0	0	0	0	0	2
Non-sentinel	0-4	16	40	8	7	71	476
	5-14	5	14	8	0	27	25
	15-64	24	122	57	4	207	76
	65+	18	87	55	3	163	92
	Unknown	0	0	0	0	0	0
	All ages	63	263	128	14	468	669

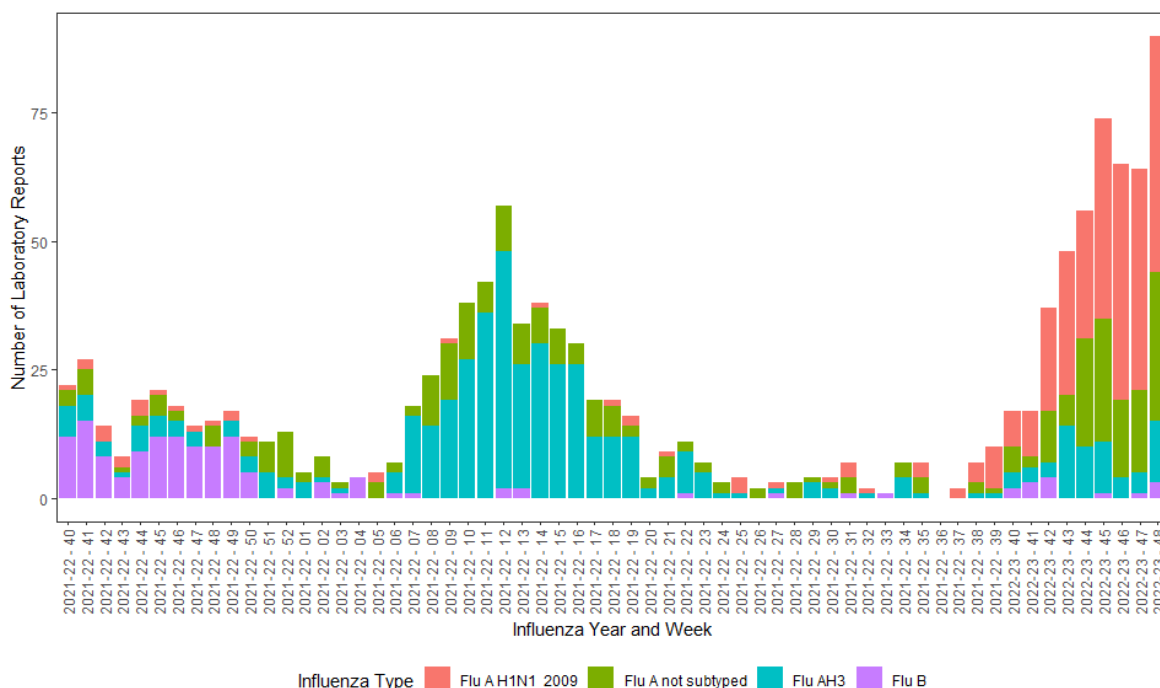
## Note

All virology data are provisional. The virology figures for previous weeks included in this or future bulletins are updated with data from laboratory returns received after the production of the last bulletin. The current bulletin reflects the most up-to-date information available. Cumulative reports of influenza types may vary from week to week as untyped specimens may be subsequently typed at the time of later reports.

Positive influenza results (dual positive influenza A and influenza B) can occur when vaccine virus is detected in a specimen taken from a person (e.g. a child under 16 years) who recently received intranasal administration of live attenuated influenza virus vaccine (LAIV). The number of positive influenza results should therefore be interpreted with caution.

Since week 34 of 2021, laboratories have used a mixture of multiplex and standard testing for SARS-CoV-2/Flu/RSV. As a result, positivity is not directly comparable between seasons.

Virology data from week 47 of 2022 includes point of care tests from RVL.



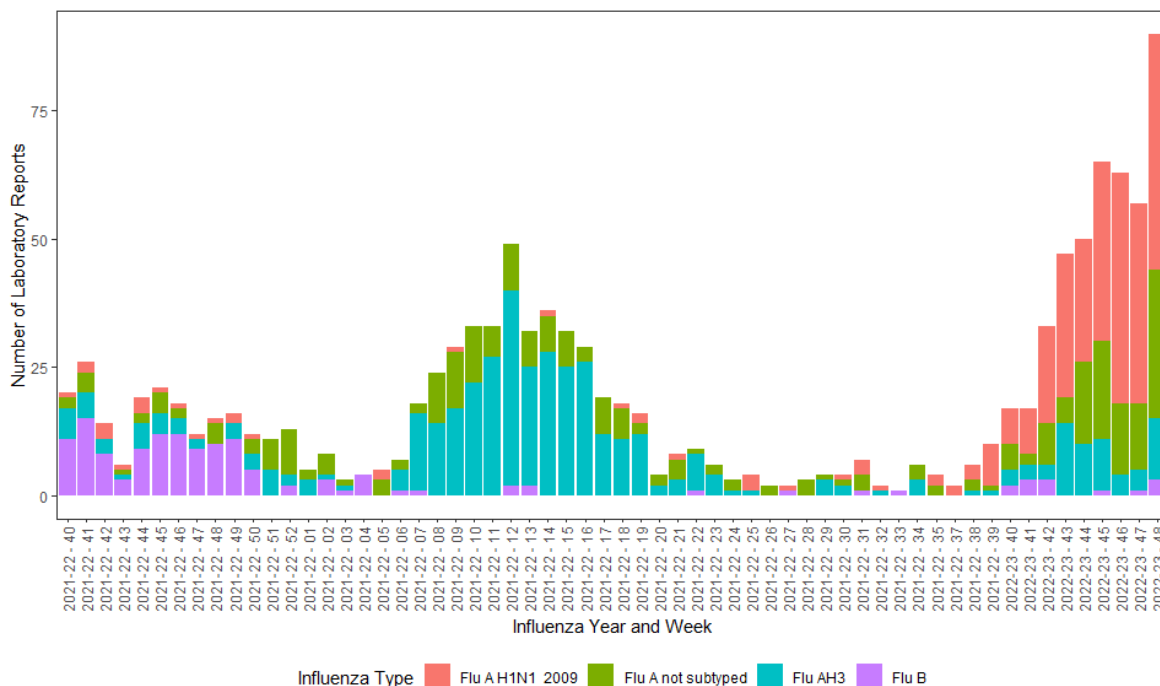
**Figure 3. Weekly number of positive influenza laboratory reports, 2021/22 – 2022/23**

**Comment**

In week 48, 90 samples were positive for flu (46 Flu A(H1N1), 29 Flu A(untyped), 12 Flu A(H3) and three Flu B from 1675 samples submitted for testing in laboratories across Northern Ireland (Figure 3). The positivity rate for week 48 was 5.4%. Since week 40, 44% of total influenza positive samples have occurred in individuals aged 15-64 years.

In week 48, 42 samples were positive for RSV. The majority (71%) of RSV positive samples since week 40 have occurred in children in the 0-4 age group (Table 2).

## Hospital Surveillance



**Figure 4. Weekly number of hospital samples testing positive for influenza by week of specimen, 2021/22 – 2022/23**

### Comment

In week 48, 90 hospital samples were positive for flu (46 Flu A(H1N1), 29 Flu A(untyped), 12 Flu A(H3) and three Flu B) from 1675 samples submitted for testing in laboratories across Northern Ireland (Figure 4).



## Outbreaks

### Comment

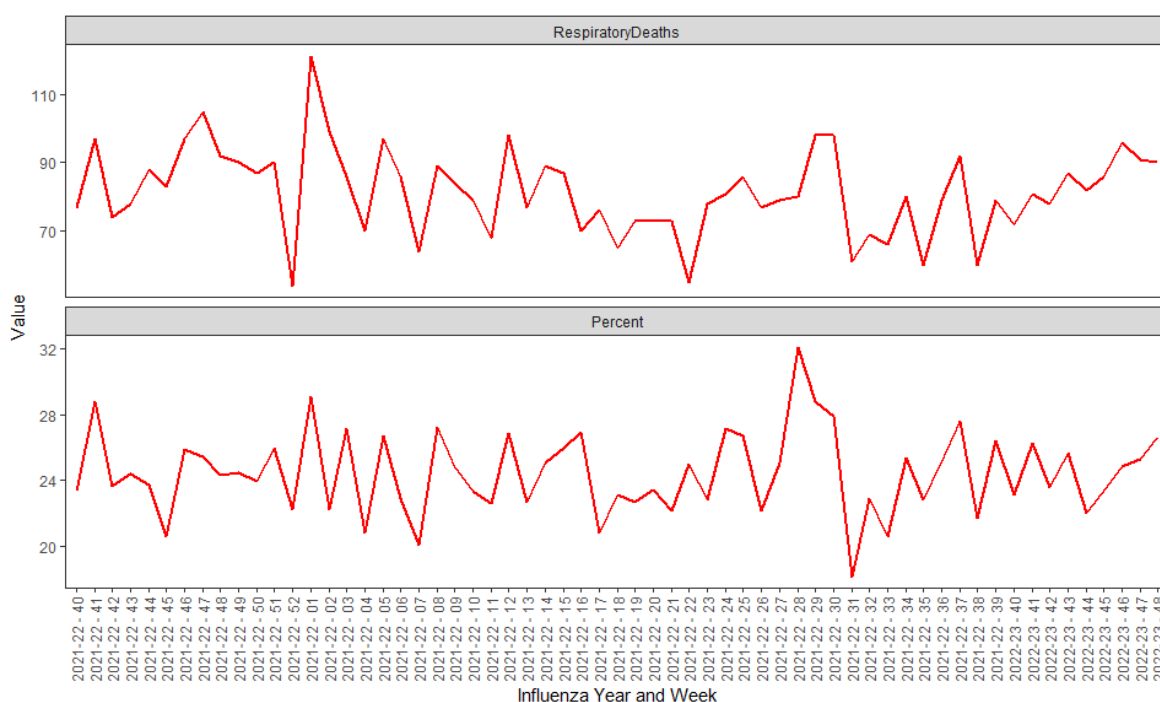
There were two respiratory outbreaks reported to the PHA Health Protection acute response duty room during week 48. Both were outbreaks of Flu A (untyped) and reported in a hospital setting.

To date, in 2022-23, there have been a total of six confirmed influenza outbreaks reported (one in a care home setting and five in a hospital) and one RSV outbreak (care home setting).

## Mortality

The Northern Ireland Statistics and Research Agency (NISRA) provides the weekly number of respiratory-associated deaths and the proportion of all-cause registered deaths (by week of death registration, not by week of death).

Respiratory-associated deaths include those that are attributable to influenza, other respiratory infections or their complications. This includes “bronchiolitis, bronchitis, influenza or pneumonia” keywords recorded on the death certificate.



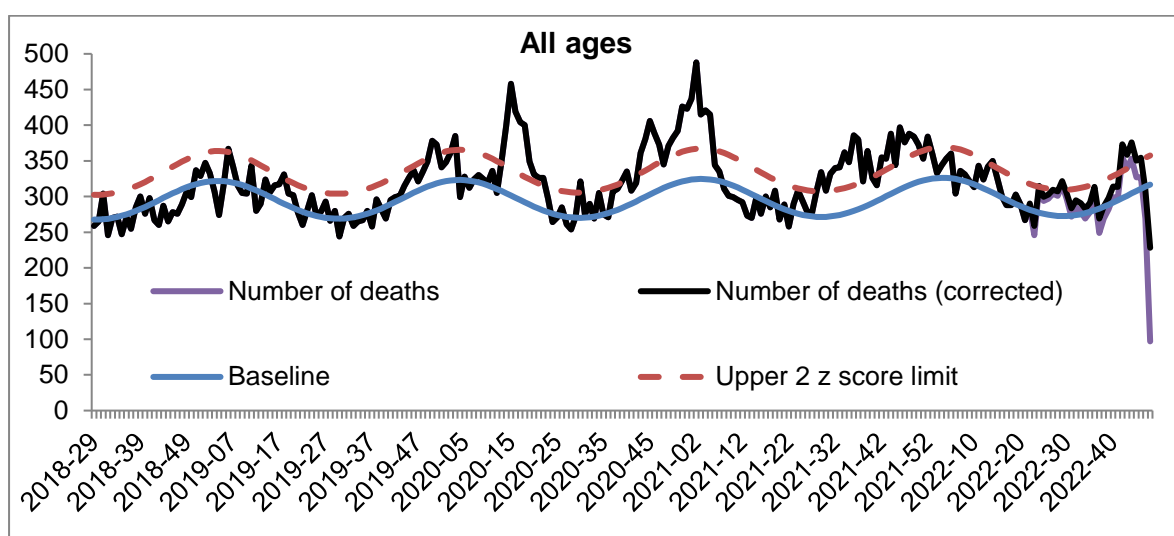
**Figure 5. Weekly count of registered deaths and percent of all deaths with respiratory keywords, by week of registration from week 40, 2021**

## Comment

In week 48, 90 respiratory associated deaths out of 338 all-cause deaths were reported (27%). This is slightly higher than the same period in 2021/22 (92 respiratory deaths out of 378 all-cause deaths, 24%).

## EuroMOMO

In 2022, based on NISRA death registrations and the EuroMOMO model, excess deaths were reported in weeks 24, 29 and 42-46 particularly in those aged 65+. Despite delay correction, reported mortality data are still provisional due to the time delay in registration and observations which can vary from week to week; not all registrations for the current week will have been included this bulletin.



**Figure 6. Weekly observed and expected number of all-cause deaths in all ages, week 29, 2018 – week 48, 2022**

Excess mortality is defined as a statistically significant increase in the number of deaths reported over the expected number for a given point in time. This calculation allows for a weekly variation in the number of deaths registered and takes account of deaths registered retrospectively. Information is used to provide an early warning to the health service of any seasonal increases in mortality to allow further investigation of excess detections.

There is no single cause of ‘additional’ deaths in the winter months but they are often attributed in part to cold weather (e.g. directly from falls, fractures, road traffic accidents), through worsening of chronic medical conditions e.g. heart and respiratory complaints and through respiratory infections including influenza.

For more information on EuroMOMO and interactive maps of reporting across the season please see <http://www.euromomo.eu/index.html>

## Further Information and International/National Updates

Further information on influenza is available at the following websites:

[PHA Seasonal Influenza](#)

[nidirect Flu Vaccination](#)

[UKHSA Seasonal Influenza Guidance - Data and Analysis](#)

[Influenza \(seasonal\) \(who.int\)](#)

[ECDC Seasonal Influenza](#)

## National updates

Detailed influenza weekly reports can be found at the following websites:

England [UKHSA Weekly National Flu Report](#)

Scotland [HPS Weekly National Seasonal Respiratory Report](#)

Wales [Public Health Wales Influenza Surveillance Report](#)

Republic of Ireland [HPSC Seasonal Influenza Surveillance Reports](#)

## International updates

Europe (ECDC and WHO) [Flu News Europe](#)

Worldwide (WHO) [WHO Influenza Surveillance Monitoring](#)

## Acknowledgements

We would like to extend our thanks to all those who assist us in the surveillance of influenza in particular the sentinel GPs, Out-of-Hours Centres, Apollo Medical, and, the Regional Virus Laboratory. Their work is greatly appreciated and their support vital in the production of this bulletin.

We acknowledge the Northern Ireland Statistics and Research Agency (NISRA) and the General Register Office Northern Ireland (GRONI) for the supply of data used in this publication. NISRA and GRONI do not accept responsibility for any alteration or manipulation of data once it has been provided.

For further information on the Enhanced Surveillance of Influenza in Northern Ireland scheme or to be added to the circulation list for this bulletin please contact: **Email:** [flusurveillance@hscni.net](mailto:flusurveillance@hscni.net)