

C. difficile surveillance

Quarterly report

April - June 2025

Key points

- CDI reports for hospital inpatients aged 2 years and over decreased by 6% (from 79 to 74 episodes) during April-June 2025 compared to January-March 2025.
- CDI rate per 100,000 bed days also decreased by 7% during April-June 2025 compared to January-March 2025.
- CDI reports for community patients aged 2 years and over increased by 10% (from 52 to 57 episodes) during April-June 2025 compared to January-March 2025.
- During April-June 2025 the most prevalent CDI ribotypes are 078-Like (18%), 002 (14%) and 014 (11%) (Table 3).
- Bed day data were not available for NHSCT, SHSCT and WHSCT hospitals and provisional figures were used this quarter (figures taken from Apr-Jun 2024).
- For data from 1st April 2023 onwards, “Inpatient episodes” refers to all patients categorised as hospital in-patient **and** ED episodes where the patient tested positive \geq 2 days after the decision to admit date.

For further information or clarification on HCAI definitions, please refer to previous reports or contact hcaini@hscni.net



Figure 1: Total CDI episodes, inpatient and community, in Northern Ireland, by quarter (patients ≥ 2 years), between 2014 and 2025

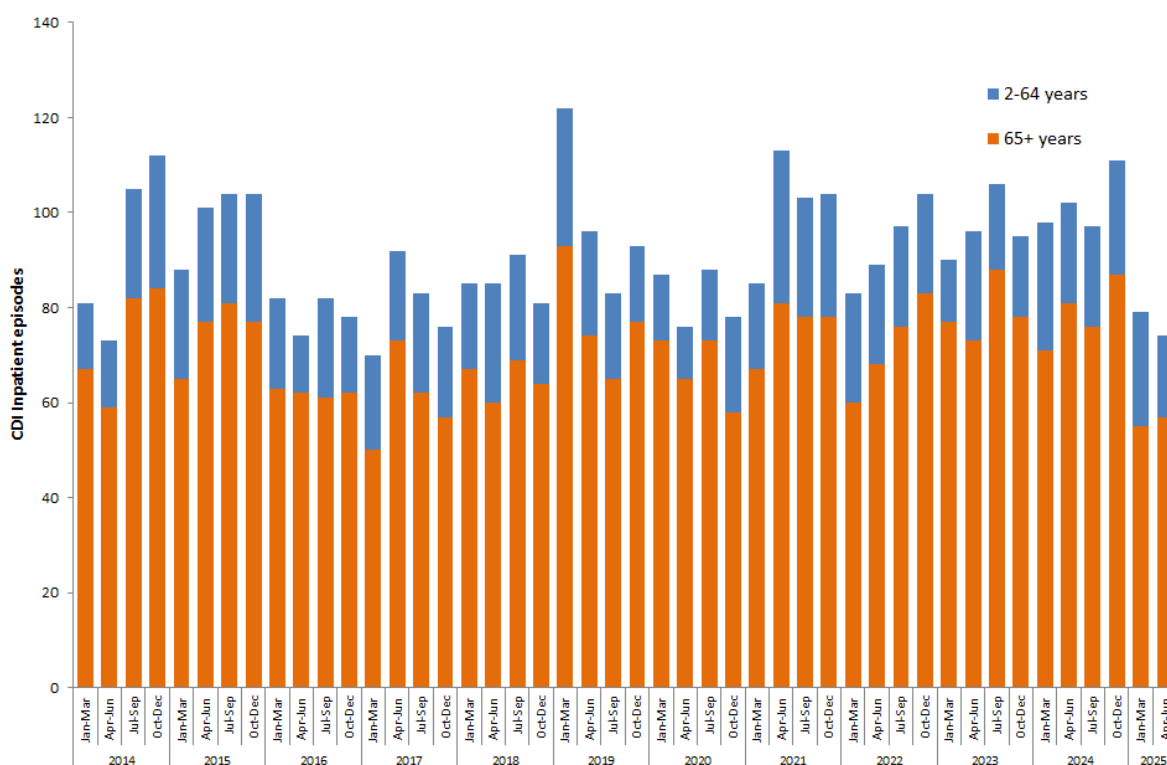


Figure 2a: Total CDI inpatient episodes, by age band, in Northern Ireland, by quarter, between 2014 and 2025

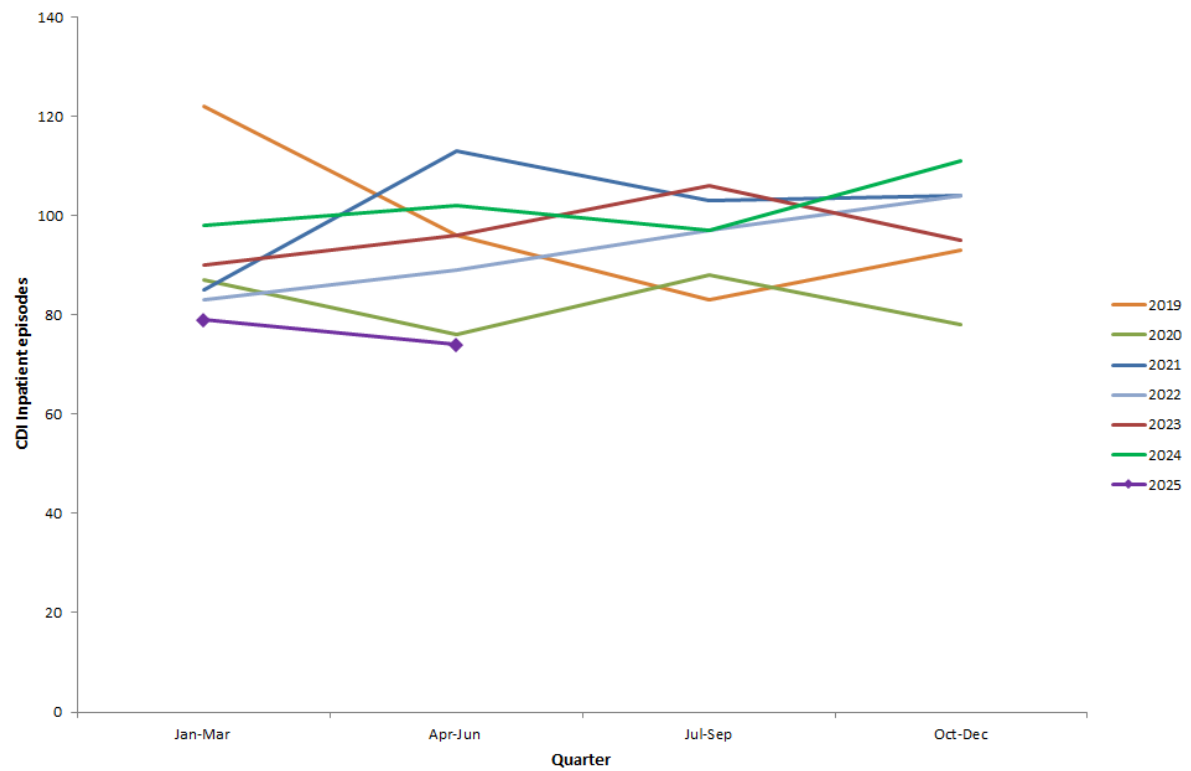


Figure 2b: Total CDI inpatient episodes in Northern Ireland, by quarter (patients \geq 2 years), between 2019 and 2025

Statistical process control (SPC) charts

- SPC charts allow a distinction to be made between natural variation and ‘special cause variation’, where something unusual may be occurring. Trends in CDI rates since Jan 2014 are shown for each HSCT in appendix B.

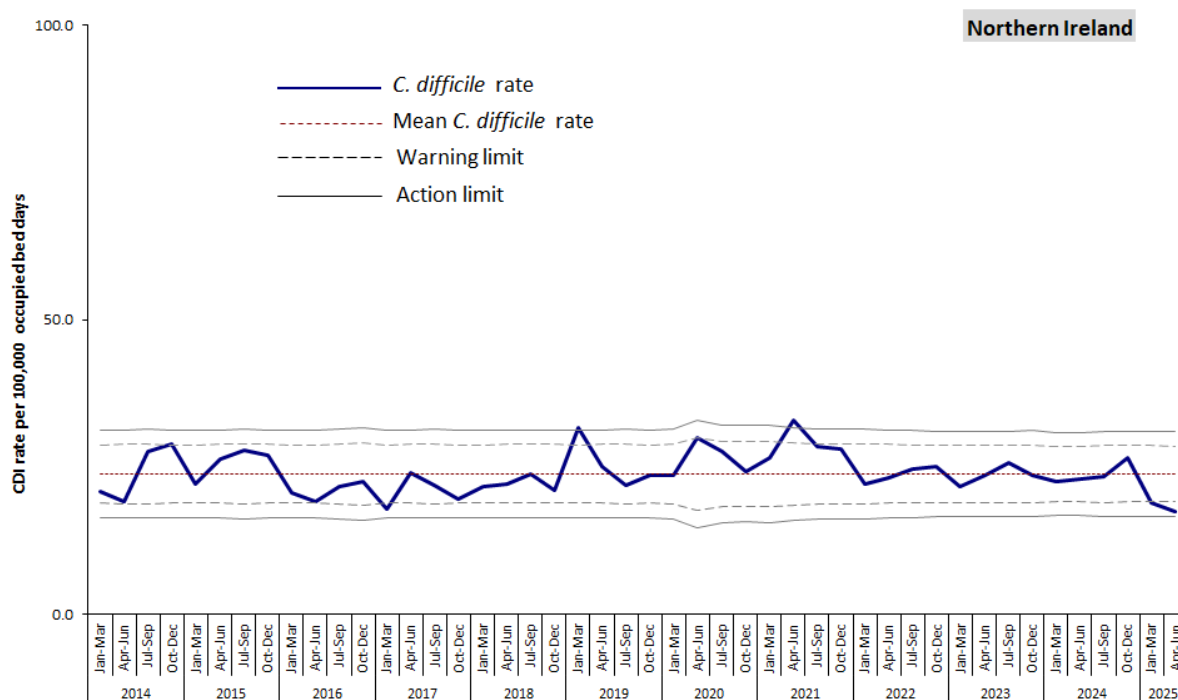


Figure 3: Statistical process control chart for quarterly *C. difficile* rates among inpatients in Northern Ireland aged 2 years and over (for HSCT level, see appendix B)

Results from the NI Ribotype Surveillance Programme

Table 1: A summary of *C. difficile* ribotypes in Hospital Inpatients aged 2 years and over, and the percentage of each against the overall total, in Northern Ireland during routine surveillance, Jul 2024 – Jun 2025.

Ribotype	Jul - Sep 2024		Oct - Dec 2024		Jan - Mar 2025		Apr - Jun 2025	
	Number	%	Number	%	Number	%	Number	%
001	3	3.1	4	3.6	0	0.0	4	5.4
002	10	10.3	7	6.3	8	10.1	8	10.8
005	5	5.2	7	6.3	3	3.8	8	10.8
011	2	2.1	4	3.6	3	3.8	1	1.4
014	6	6.2	13	11.7	4	5.1	8	10.8
015	5	5.2	8	7.2	8	10.1	5	6.8
018	1	1.0	1	0.9	3	3.8	0	0.0
020	10	10.3	8	7.2	5	6.3	2	2.7
023	12	12.4	12	10.8	4	5.1	4	5.4
078-like*	10	10.3	3	2.7	9	11.4	16	21.6
Other	23	23.7	32	28.8	22	27.8	11	14.9
Not groupable**	1	1.0	3	2.7	5	6.3	4	5.4
Not on ribotype list	9	9.3	9	8.1	5	6.3	3	4.1
Not isolated***	0	0.0	0	0.0	0	0.0	0	0.0
Total	97		111		79		74	

Table 2: A summary of *C. difficile* ribotypes in Community Patients aged 2 years and over, and the percentage of each against the overall total, in Northern Ireland during routine surveillance, Jul 2024 – Jun 2025.

Ribotype	Jul - Sep 2024		Oct - Dec 2024		Jan - Mar 2025		Apr - Jun 2025	
	Number	%	Number	%	Number	%	Number	%
001	4	4.0	1	1.3	3	5.8	0	0.0
002	6	5.9	9	11.4	9	17.3	10	17.5
005	10	9.9	5	6.3	3	5.8	1	1.8
011	0	0.0	2	2.5	2	3.8	1	1.8
014	8	7.9	8	10.1	6	11.5	7	12.3
015	4	4.0	13	16.5	2	3.8	5	8.8
018	1	1.0	4	5.1	0	0.0	1	1.8
020	4	4.0	2	2.5	0	0.0	6	10.5
023	9	8.9	3	3.8	1	1.9	4	7.0
027	0	0.0	0	0.0	0	0.0	0	0.0
078-like*	15	14.9	4	5.1	6	11.5	8	14.0
Other	30	29.7	13	16.5	8	15.4	9	15.8
Not groupable**	3	3.0	4	5.1	4	7.7	3	5.3
Not on ribotype list	6	5.9	10	12.7	8	15.4	2	3.5
Not isolated***	1	1.0	1	1.3	0	0.0	0	0.0
Total	101		79		52		57	

* 078-Like means this isolate is PCR ribotype 078, or a very closely related (Clade 5) strain e.g. 126,193

** 'Not groupable' ribotypes do not match existing profiles

*** 'Not isolated' indicates isolates that have no ribotype information supplied, with at least six weeks since the date of the specimen.

**Table 3: Descriptive data for *C. difficile* ribotypes 078-Like, 002 and 014 in Northern Ireland
Hospital Inpatients and Community Patients, April – June 2025.**

		078-Like (n= 24)		002 (n= 18)		014 (n = 15)	
Age							
	range	56-95		42-92		23-94	
	median	76		79		81	
Sex		n	%	n	%	n	%
	Female	11	45.8	13	72.2	10	66.7
	Male	13	54.2	5	27.8	5	33.3
Trust							
	Belfast	8	33.3	6	33.3	3	20.0
	Northern	3	12.5	3	16.7	2	13.3
	South Eastern	3	12.5	3	16.7	3	20.0
	Southern	3	12.5	5	27.8	7	46.7
	Western	7	29.2	1	5.6	0	0.0
Source							
	Inpatient	16	66.7	8	44.4	8	53.3
	Community~	8	33.3	10	55.6	7	46.7

~ Community specimens include those taken from Accident and Emergency (<2days after decision to admit date and those not admitted), Outpatients, GPs, Hospice, Care Homes, Hospital Care at Home and Psychiatric facilities.

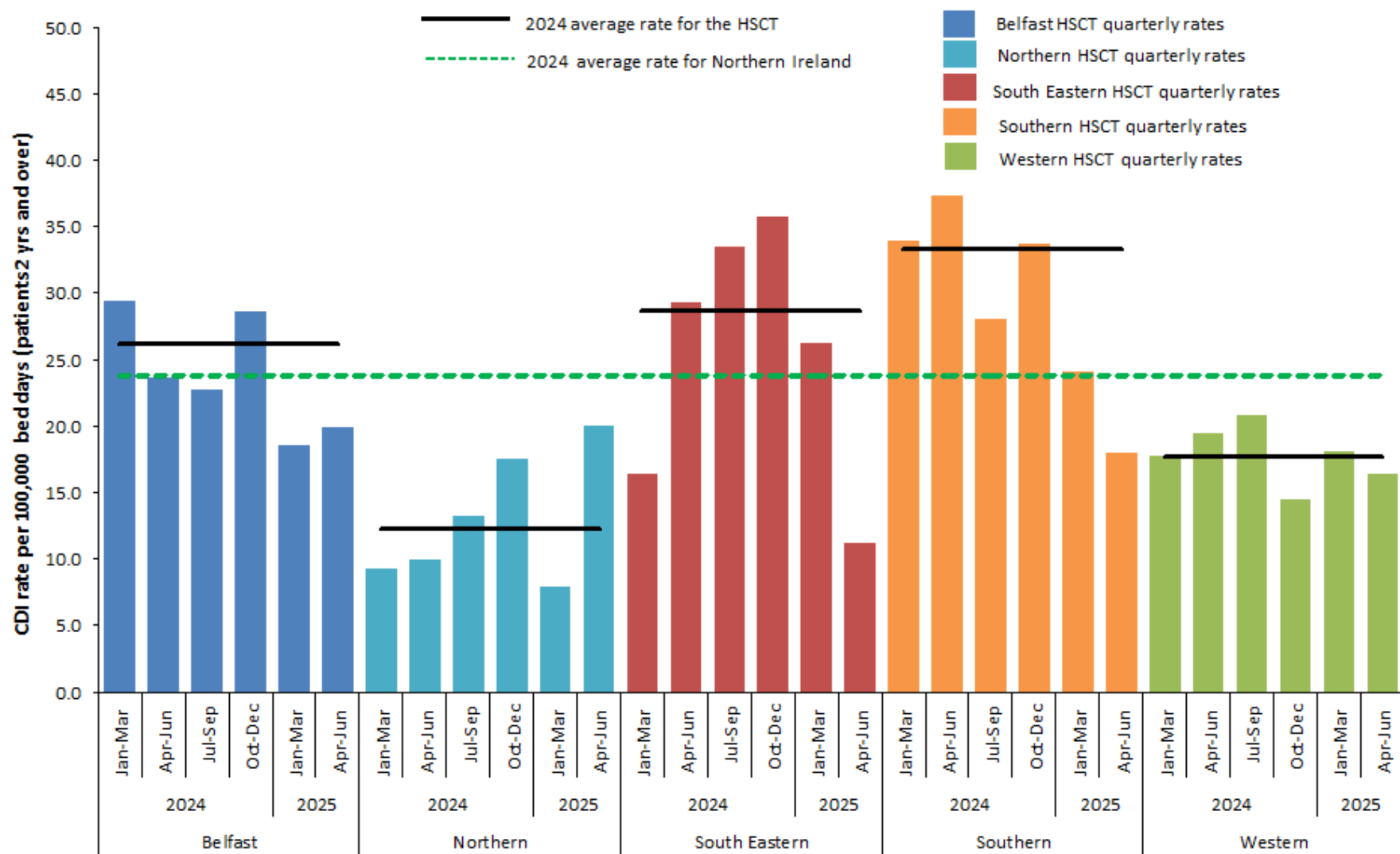


Figure 4: Quarterly rates of *C. difficile* among inpatients aged 2 years and over, by HSCT, January 2024 – June 2025, compared with annual Northern Ireland and HSCT rates for 2024

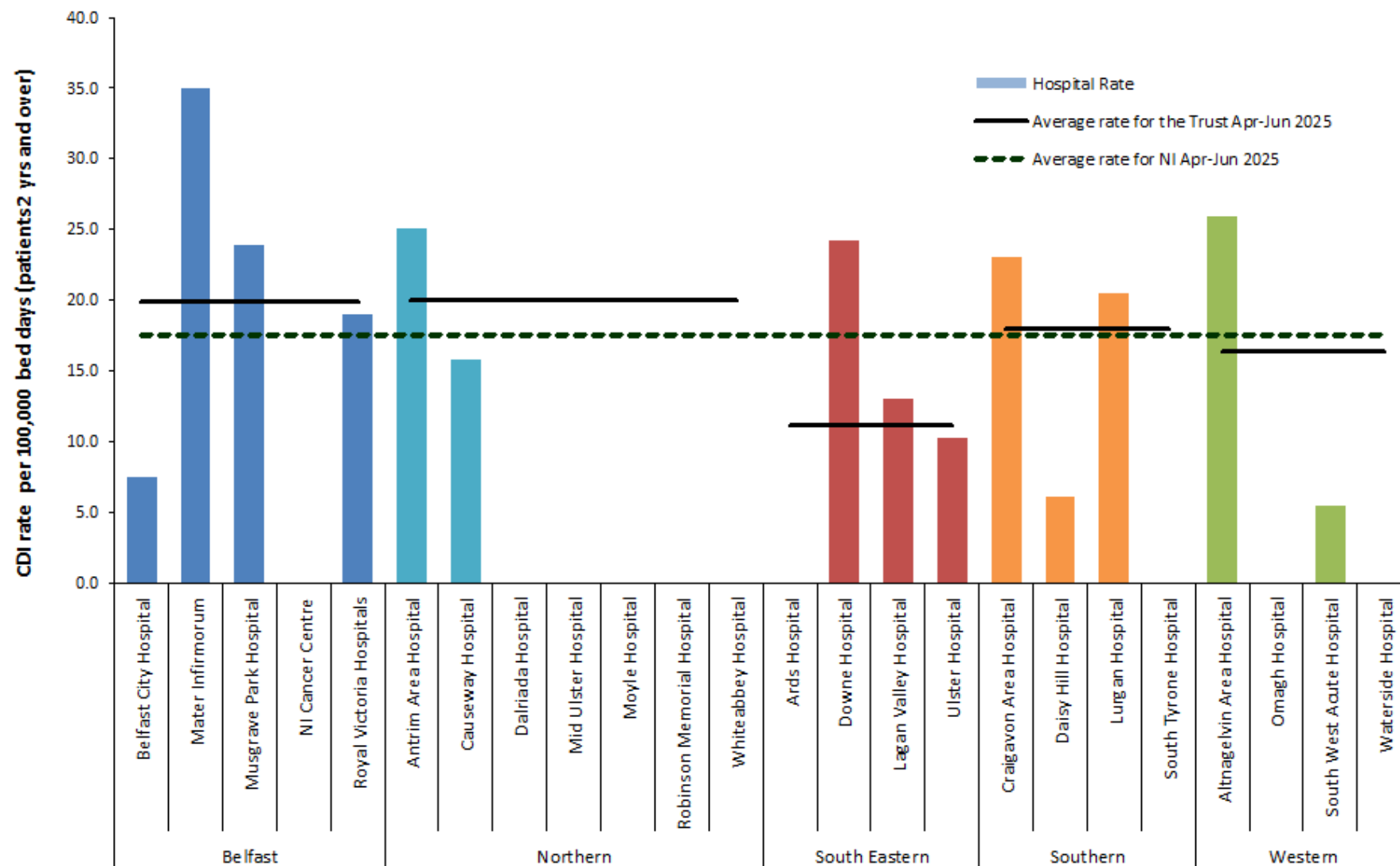


Figure 5: *C. difficile* rates during April-June 2025 Inpatients aged 2 years and over, by hospital, including HSCT rates and average rate for Northern Ireland (see appendix A, Table 4)

Appendix A

Table 4: Quarterly rates* of *C. difficile* reports in patients aged 2 years and over, by hospital, Jul 2024 – Jun 2025.

Hospital	Jul-Sep 2024	Oct-Dec 2024	Jan-Mar 2025	Apr-Jun 2025
Belfast City Hospital	30.68	31.00	37.52	7.56
Mater Infirmorum	19.59	38.28	19.28	34.98
Musgrave Park Hospital	17.76	22.15	11.14	23.88
NICCO	65.10	108.04	22.01	0.00
Royal Group of Hospitals	20.56	23.13	16.67	18.98
Belfast Health & Social Care Trust	22.71	28.66	18.55	19.88
Antrim Area Hospital	18.71	12.88	8.45	25.12
Causeway Hospital	5.20	30.92	5.17	15.78
Dalriada Hospital	0.00	0.00	0.00	0.00
Mid Ulster Hospital	0.00	0.00	0.00	0.00
Moyle Hospital	0.00	0.00	0.00	0.00
Robinson Memorial Hospital	0.00	58.28	0.00	0.00
Whiteabbey Hospital	0.00	0.00	50.40	0.00
Northern Health & Social Care Trust	13.20	17.51	7.94	20.04
Ards Hospital	0.00	0.00	63.69	0.00
Downe Hospital	112.06	87.80	17.06	24.24
Lagan Valley Hospital	38.67	25.64	25.93	13.05
Ulster Hospital	27.74	32.90	26.26	10.29
South Eastern Health & Social Care Trust	33.49	35.79	26.29	11.16
Craigavon Area Hospital	31.60	39.16	18.59	23.10
Daisy Hill Hospital	25.60	23.29	39.89	6.11
Lurgan Hospital	0.00	0.00	20.37	20.52
South Tyrone Hospital	28.63	58.79	26.90	0.00
Southern Health & Social Care Trust	28.00	33.77	24.13	17.97
Altnagelvin Area Hospital	21.31	15.62	18.31	25.91
Omagh Hospital	29.48	0.00	0.00	0.00
South West Acute Hospital	26.92	21.14	26.51	5.48
Waterside Hospital	0.00	0.00	0.00	0.00
Western Health & Social Care Trust	20.83	14.54	18.05	16.45
NI TOTAL	23.44	26.50	18.89	17.55

Table 5: Quarterly *C. difficile* reports in patients aged 2 years and over, by HSCT, Jul 2024 – Jun 2025.

Trust	Jul-Sep 2024 Episodes	Oct-Dec 2024 Episodes	Jan-Mar 2025 Episodes	Apr-Jun 2025 Episodes
Belfast Health & Social Care Trust	29	37	24	27
Northern Health & Social Care Trust	10	13	6	15
South Eastern Health & Social Care Trust	24	26	19	8
Southern Health & Social Care Trust	20	25	18	13
Western Health & Social Care Trust	14	10	12	11
NI TOTAL	97	111	79	74
NI community TOTAL	101	79	52	57

*Note: Rates displayed are per 100,000 occupied bed days. Previous reports presented rates per 1,000 occupied bed days.

Bed day data were not available for NHSCT, SHSCT and WHSCT - provisional figures were used this quarter (figures taken from Apr-Jun 2024).

Appendix A

Table 6: Quarterly rates* of *C. difficile* reports in patients aged 65 years and over, by hospital, Jul 2024 – Jun 2025.

Hospital	Jul-Sep 2024	Oct-Dec 2024	Jan-Mar 2025	Apr-Jun 2025
Belfast City Hospital	50.91	16.50	35.20	0.00
Mater Infirmorum	16.27	38.22	25.28	50.82
Musgrave Park Hospital	28.43	26.80	8.71	28.06
NICCO	46.36	180.34	0.00	0.00
Royal Group of Hospitals	20.93	30.06	14.67	27.90
Belfast Health & Social Care Trust	24.60	34.30	16.64	28.96
Antrim Area Hospital	24.91	16.29	14.22	30.10
Causeway Hospital	7.86	24.59	0.00	24.15
Dalriada Hospital	0.00	0.00	0.00	0.00
Mid Ulster Hospital	0.00	0.00	0.00	0.00
Moyle Hospital	0.00	0.00	0.00	0.00
Robinson Memorial Hospital	0.00	69.40	0.00	0.00
Whiteabbey Hospital	0.00	0.00	69.11	0.00
Northern Health & Social Care Trust	17.38	18.09	10.71	24.01
Ards Hospital	0.00	0.00	63.69	0.00
Downe Hospital	120.34	123.58	26.10	24.61
Lagan Valley Hospital	43.57	28.70	30.92	14.94
Ulster Hospital	39.02	49.67	33.71	10.91
South Eastern Health & Social Care Trust	45.18	51.39	33.71	12.20
Craigavon Area Hospital	39.90	53.80	17.73	36.44
Daisy Hill Hospital	20.01	27.59	44.53	10.36
Lurgan Hospital	0.00	0.00	21.62	23.43
South Tyrone Hospital	28.63	63.29	28.28	0.00
Southern Health & Social Care Trust	30.88	43.13	25.22	26.76
Altnagelvin Area Hospital	34.99	16.88	25.07	26.28
Omagh Hospital	29.90	0.00	0.00	0.00
South West Acute Hospital	35.60	21.67	25.45	7.13
Waterside Hospital	0.00	0.00	0.00	0.00
Western Health & Social Care Trust	31.50	15.61	21.34	15.98
NI TOTAL	29.30	32.78	21.10	22.19

Table 7: Quarterly *C. difficile* reports in patients aged 65 years and over, by HSCT, Jul 2024 – Jun 2025.

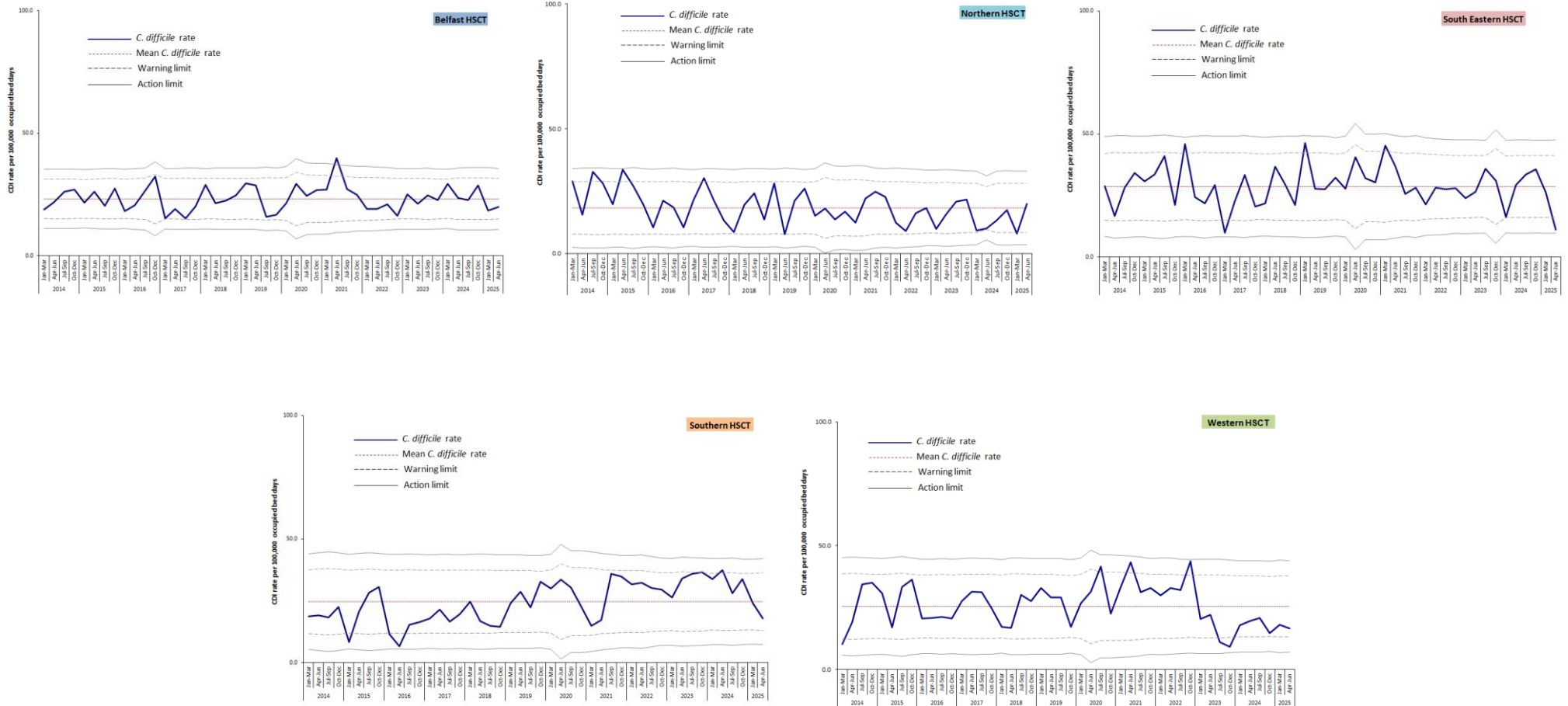
Trust	Jul-Sep 2024 Episodes	Oct-Dec 2024 Episodes	Jan-Mar 2025 Episodes	Apr-Jun 2025 Episodes
Belfast Health & Social Care Trust	17	26	12	20
Northern Health & Social Care Trust	9	9	5	12
South Eastern Health & Social Care Trust	22	25	16	6
Southern Health & Social Care Trust	14	20	12	12
Western Health & Social Care Trust	14	7	10	7
NI TOTAL	76	87	55	57
NI community TOTAL	84	64	47	41

*Note: Rates displayed are per 100,000 occupied bed days. Previous reports presented rates per 1,000 occupied bed days.

Bed day data for patients aged 65 years and over were not available for NHSCT, SEHSCT, SHSCT and WHSCT - provisional figures were used this quarter (figures taken from Apr-Jun 2024).

Appendix B

Trends in *C. difficile* rates in inpatients aged 2 years and over, by HSCT and quarter, 2014 – 2025



Appendix C

Table 8: *C. difficile* reports among inpatients* in Northern Ireland aged 2 years and over, by financial year and HSCT

HSCT	2018/19	2019/20	2020/21	2021/22	2022/23	2023/24*	2024/25*
Belfast	132	106	101	128	107	136	121
Northern	57	47	34	52	37	49	39
South Eastern	82	72	76	69	75	72	90
Southern	43	71	50	74	80	99	90
Western	65	63	66	80	81	39	49
Northern Ireland	379	359	327	403	380	395	389

Table 9: *C. difficile* reports among inpatients* in Northern Ireland aged 65 years and over, by financial year and HSCT

HSCT	2018/19	2019/20	2020/21	2021/22	2022/23	2023/24*	2024/25*
Belfast	98	80	80	84	78	96	78
Northern	48	39	27	39	31	43	32
South Eastern	67	68	68	60	66	63	83
Southern	32	57	37	56	63	78	66
Western	41	45	51	58	66	30	40
Northern Ireland	286	289	263	297	304	310	299

*“Inpatient episodes” for 2023/24 and 2024/25 include all patients categorised as hospital in-patient and ED patients with a positive specimen taken \geq 2 days after the decision to admit date. Previous years include inpatients only.