

# *C. difficile* surveillance

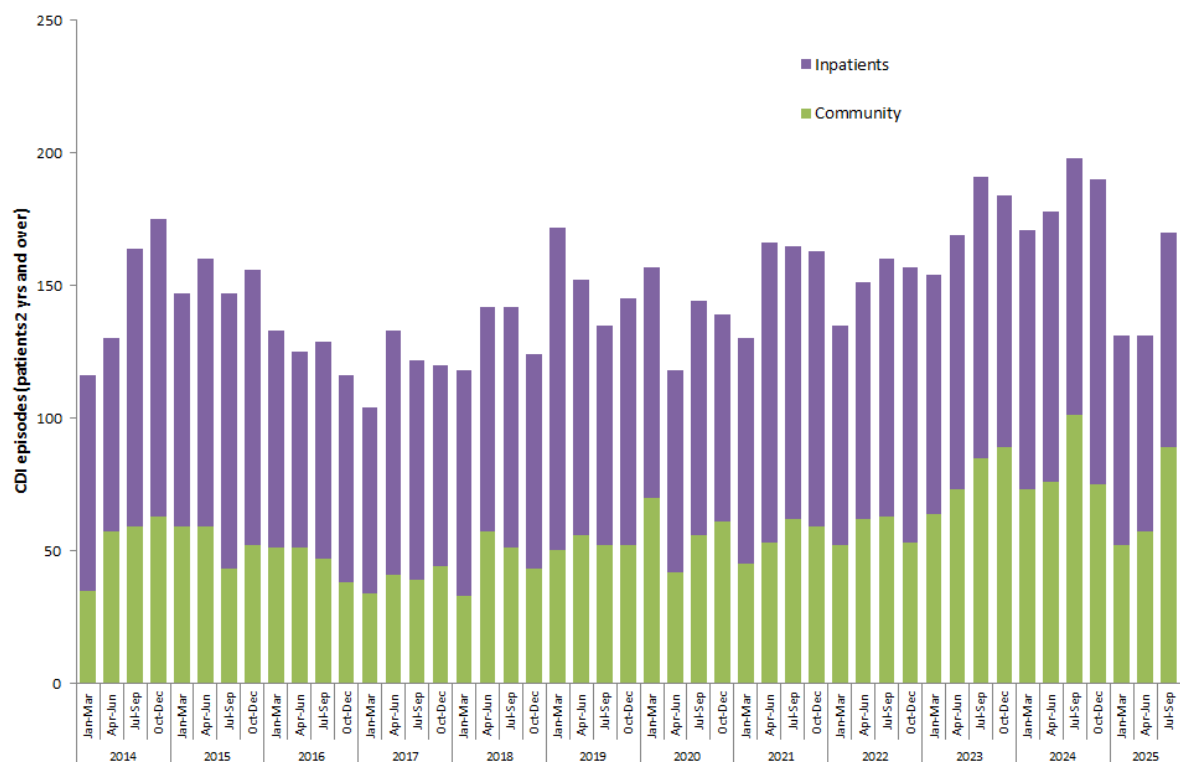
## Quarterly report

### July - September 2025

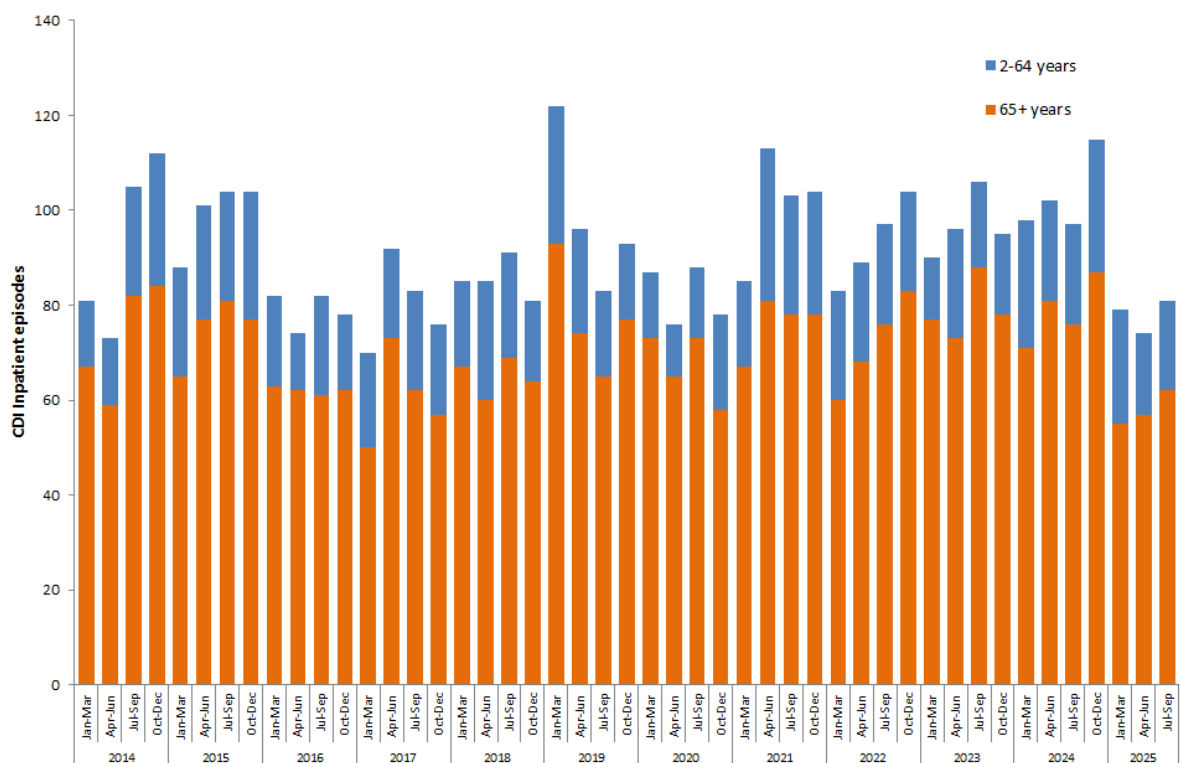
#### Key points

- CDI reports for hospital inpatients aged 2 years and over increased by 9% (from 74 to 81 episodes) during July-September 2025 compared to April-June 2025.
- CDI rate per 100,000 bed days increased by 7% during July-September 2025 compared to April-June 2025.
- CDI reports for community patients aged 2 years and over increased by 56% (from 57 to 89 episodes) during July-September 2025 compared to April-June 2025.
- During July-September 2025 the most prevalent CDI ribotypes are 002 (12%), 015 (12%) and 078-Like (11%) (Table 3).
- Bed day data were not available for NHSCT, SHSCT and WHSCT hospitals and provisional figures were used this quarter (figures taken from Jul-Sept 2024).
- For data from 1<sup>st</sup> April 2023 onwards, "Inpatient episodes" refers to all patients categorised as hospital in-patient **and** ED episodes where the patient tested positive  $\geq$  2 days after the decision to admit date.

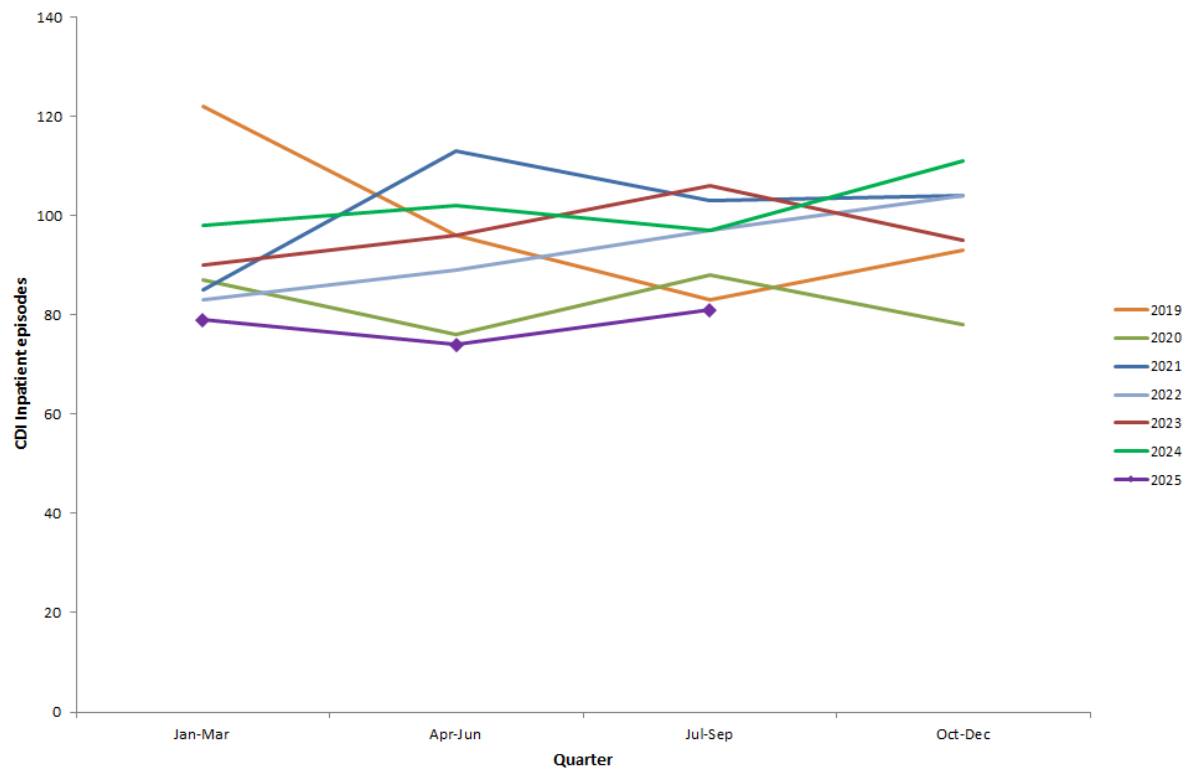
For further information or clarification on HCAI definitions, please refer to previous reports or contact [hcaini@hscni.net](mailto:hcaini@hscni.net)



**Figure 1: Total CDI episodes, inpatient and community, in Northern Ireland, by quarter (patients  $\geq$  2 years), between 2014 and 2025**



**Figure 2a: Total CDI inpatient episodes, by age band, in Northern Ireland, by quarter, between 2014 and 2025**



**Figure 2b: Total CDI inpatient episodes in Northern Ireland, by quarter (patients  $\geq 2$  years), between 2019 and 2025**

## Statistical process control (SPC) charts

- SPC charts allow a distinction to be made between natural variation and 'special cause variation', where something unusual may be occurring. Trends in CDI rates since Jan 2014 are shown for each HSCT in appendix B.

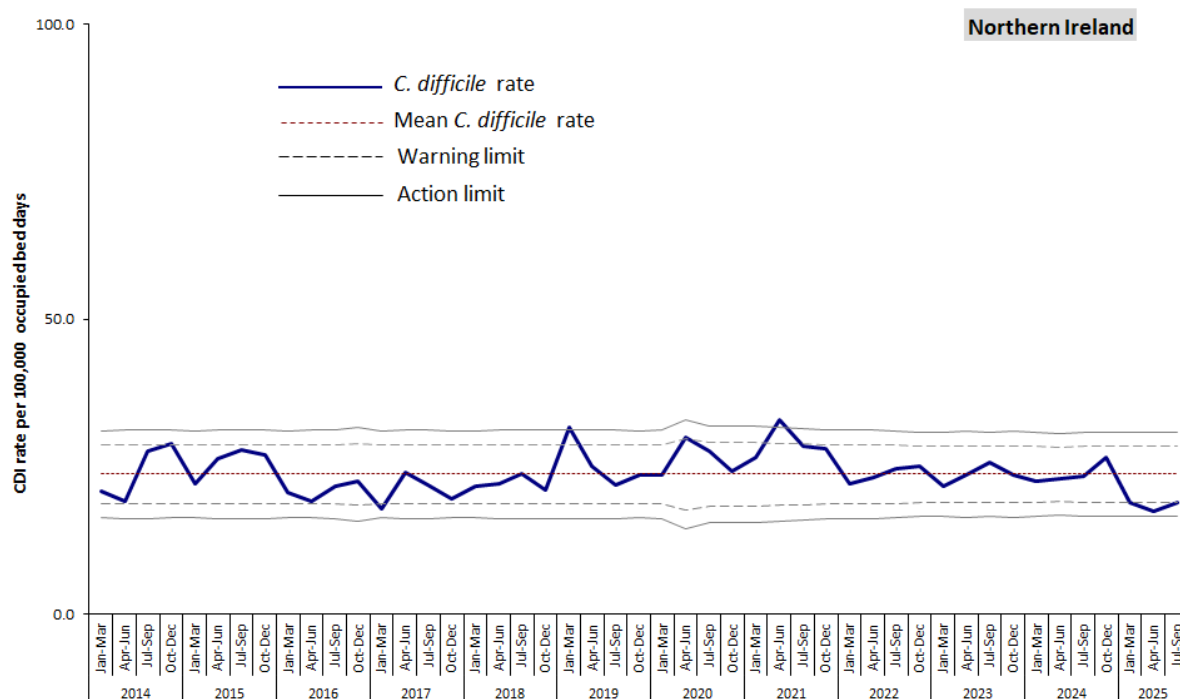


Figure 3: Statistical process control chart for quarterly *C. difficile* rates among inpatients in Northern Ireland aged 2 years and over (for HSCT level, see appendix B)

## Results from the NI Ribotype Surveillance Programme

**Table 1: A summary of *C. difficile* ribotypes in Hospital Inpatients aged 2 years and over, and the percentage of each against the overall total, in Northern Ireland during routine surveillance, Oct 2024 – Sept 2025.**

Ribotype	Oct - Dec 2024		Jan - Mar 2025		Apr - Jun 2025		Jul - Sep 2025	
	Number	%	Number	%	Number	%	Number	%
001	4	3.6	0	0.0	4	5.4	1	1.2
002	7	6.3	8	10.1	8	10.8	13	16.0
005	7	6.3	3	3.8	8	10.8	6	7.4
011	4	3.6	3	3.8	1	1.4	4	4.9
014	13	11.7	4	5.1	8	10.8	8	9.9
015	8	7.2	8	10.1	5	6.8	11	13.6
018	1	0.9	3	3.8	0	0.0	1	1.2
020	8	7.2	5	6.3	2	2.7	2	2.5
023	12	10.8	4	5.1	4	5.4	3	3.7
027	0	0.0	0	0.0	0	0.0	2	2.5
078-like*	3	2.7	9	11.4	16	21.6	9	11.1
Other	32	28.8	22	27.8	11	14.9	15	18.5
Not groupable**	3	2.7	5	6.3	4	5.4	5	6.2
Not on ribotype list	9	8.1	5	6.3	3	4.1	1	1.2
Not isolated***	0	0.0	0	0.0	0	0.0	0	0.0
<b>Total</b>	<b>111</b>		<b>79</b>		<b>74</b>		<b>81</b>	

**Table 2: A summary of *C. difficile* ribotypes in Community Patients aged 2 years and over, and the percentage of each against the overall total, in Northern Ireland during routine surveillance, Oct 2024 – Sept 2025.**

Ribotype	Oct - Dec 2024		Jan - Mar 2025		Apr - Jun 2025		Jul - Sep 2025	
	Number	%	Number	%	Number	%	Number	%
001	1	1.3	3	5.8	0	0.0	2	2.2
002	9	11.4	9	17.3	10	17.5	8	9.0
005	5	6.3	3	5.8	1	1.8	9	10.1
011	2	2.5	2	3.8	1	1.8	0	0.0
014	8	10.1	6	11.5	7	12.3	7	7.9
015	13	16.5	2	3.8	5	8.8	9	10.1
018	4	5.1	0	0.0	1	1.8	4	4.5
020	2	2.5	0	0.0	6	10.5	4	4.5
023	3	3.8	1	1.9	4	7.0	8	9.0
027	0	0.0	0	0.0	0	0.0	0	0.0
078-like*	4	5.1	6	11.5	8	14.0	9	10.1
Other	13	16.5	8	15.4	9	15.8	21	23.6
Not groupable**	4	5.1	4	7.7	3	5.3	2	2.2
Not on ribotype list	10	12.7	8	15.4	2	3.5	5	5.6
Not isolated***	1	1.3	0	0.0	0	0.0	1	1.1
<b>Total</b>	<b>79</b>		<b>52</b>		<b>57</b>		<b>89</b>	

\* 078-Like means this isolate is PCR ribotype 078, or a very closely related (Clade 5) strain e.g. 126,193

\*\* 'Not groupable' ribotypes do not match existing profiles

\*\*\* 'Not isolated' indicates isolates that have no ribotype information supplied, with at least six weeks since the date of the specimen.

**Table 3: Descriptive data for *C. difficile* ribotypes 002, 015 and 078-Like\* in Northern Ireland  
Hospital Inpatients and Community Patients, July - Sept 2025.**

		002 (n= 21)		015 (n= 20)		078-like* (n= 18)	
<b>Age</b>							
	range	54-93		25-95		14-91	
	median	80		78		79	
<b>Sex</b>		n	%	n	%	n	%
	Female	10	47.6	10	50.0	12	66.7
	Male	11	52.4	10	50.0	6	33.3
<b>Trust</b>							
	Belfast	7	33.3	4	20.0	8	44.4
	Northern	4	19.0	2	10.0	2	11.1
	South Eastern	4	19.0	1	5.0	0	0.0
	Southern	3	14.3	10	50.0	3	16.7
	Western	3	14.3	3	15.0	5	27.8
<b>Source</b>							
	Inpatient	13	61.9	11	55.0	9	50.0
	Community~	8	38.1	9	45.0	9	50.0

~ Community specimens include those taken from Accident and Emergency (<2days after decision to admit date and those not admitted), Outpatients, GPs, Hospice, Care Homes, Hospital Care at Home and Psychiatric facilities.

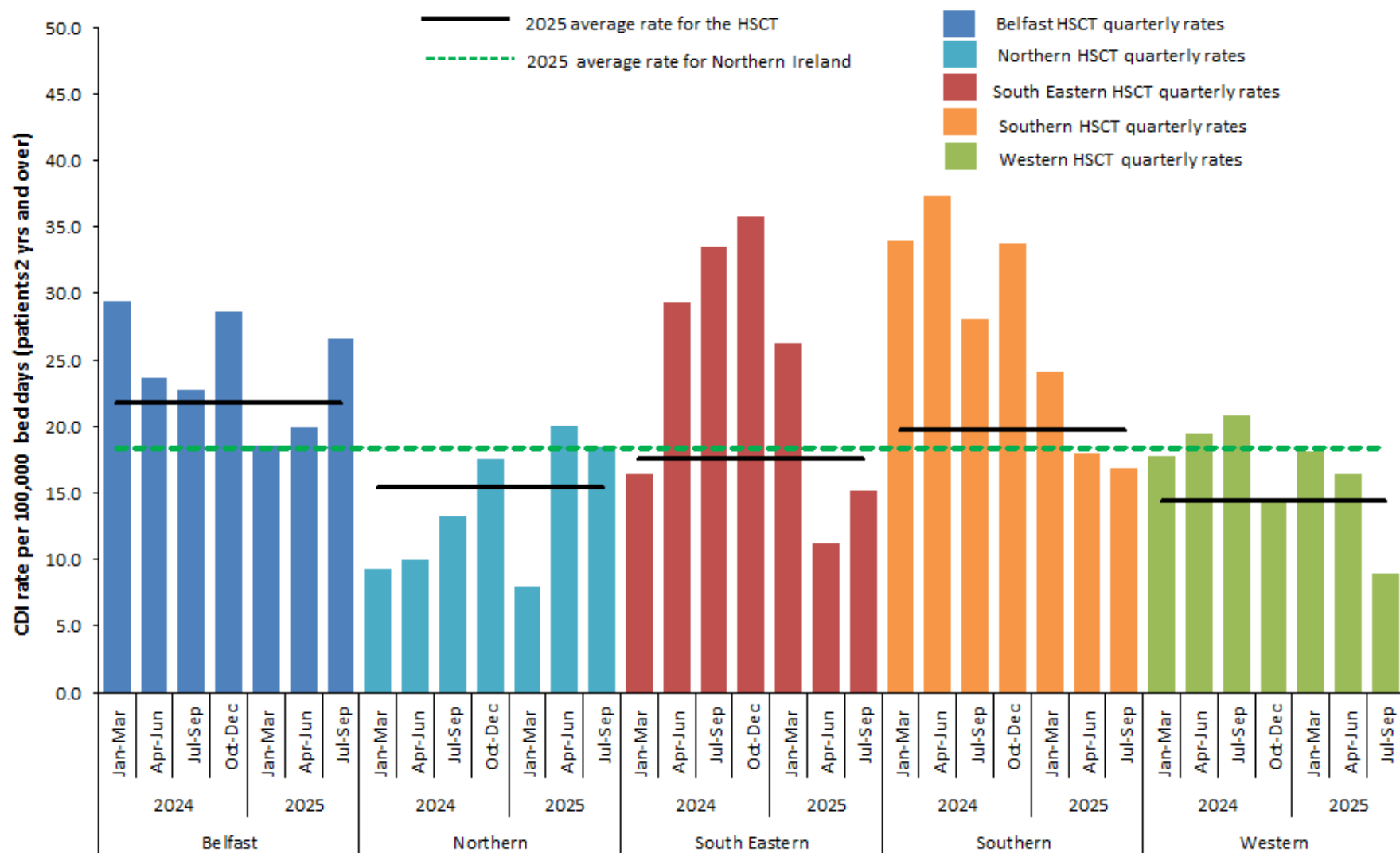


Figure 4: Quarterly rates of *C. difficile* among inpatients aged 2 years and over, by HSCT, January 2024 – September 2025, compared with annual Northern Ireland and HSCT rates for 2025



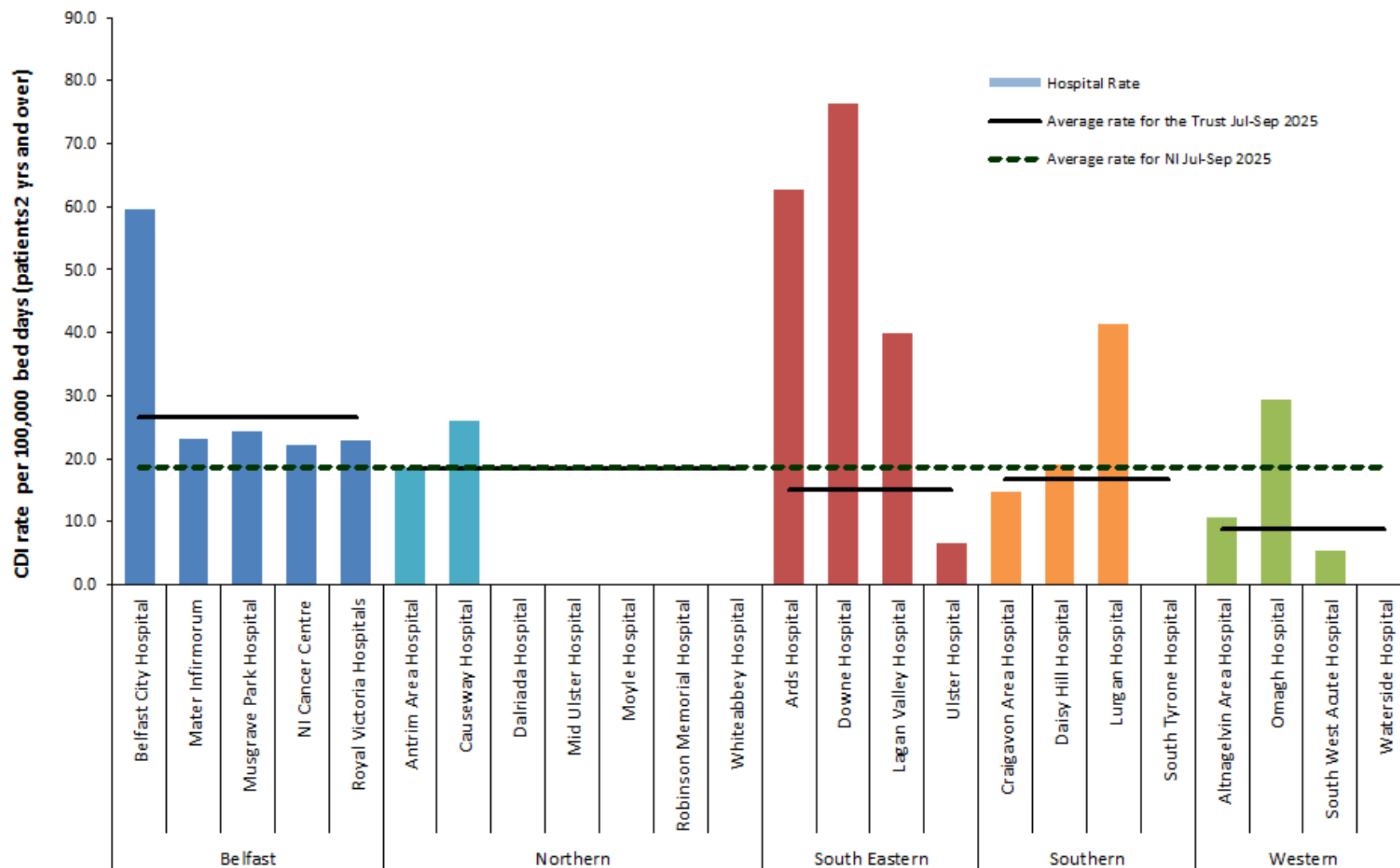


Figure 5: *C. difficile* rates during July-September 2025 Inpatients aged 2 years and over, by hospital, including HSCT rates and average rate for Northern Ireland (see appendix A, Table 4)

## Appendix A

**Table 4: Quarterly rates\* of *C. difficile* reports in patients aged 2 years and over, by hospital, Oct 2024 – Sep 2025.**

Hospital	Oct-Dec 2024	Jan-Mar 2025	Apr-Jun 2025	Jul-Sep 2025
Belfast City Hospital	31.00	37.52	7.56	59.69
Mater Infirmorum	38.28	19.28	34.98	23.22
Musgrave Park Hospital	22.15	11.14	23.88	24.27
NICCO	108.04	22.01	0.00	22.17
Royal Group of Hospitals	23.13	16.67	18.98	22.94
<b>Belfast Health &amp; Social Care Trust</b>	<b>28.66</b>	<b>18.55</b>	<b>19.88</b>	<b>26.54</b>
Antrim Area Hospital	12.88	8.45	25.12	18.71
Causeway Hospital	30.92	5.17	15.78	26.02
Dalriada Hospital	0.00	0.00	0.00	0.00
Mid Ulster Hospital	0.00	0.00	0.00	0.00
Moyle Hospital	0.00	0.00	0.00	0.00
Robinson Memorial Hospital	58.28	0.00	0.00	0.00
Whiteabbey Hospital	0.00	50.40	0.00	0.00
<b>Northern Health &amp; Social Care Trust</b>	<b>17.51</b>	<b>7.94</b>	<b>20.04</b>	<b>18.48</b>
Ards Hospital	0.00	63.69	0.00	62.66
Downe Hospital	87.80	17.06	24.24	76.32
Lagan Valley Hospital	25.64	25.93	13.05	39.96
Ulster Hospital	32.90	26.26	10.29	6.75
<b>South Eastern Health &amp; Social Care Trust</b>	<b>35.79</b>	<b>26.29</b>	<b>11.16</b>	<b>15.21</b>
Craigavon Area Hospital	39.16	18.59	23.10	14.75
Daisy Hill Hospital	23.29	39.89	6.11	19.20
Lurgan Hospital	0.00	20.37	20.52	41.37
South Tyrone Hospital	58.79	26.90	0.00	0.00
<b>Southern Health &amp; Social Care Trust</b>	<b>33.77</b>	<b>24.13</b>	<b>17.97</b>	<b>16.80</b>
Altnagelvin Area Hospital	15.62	18.31	25.91	10.65
Omagh Hospital	0.00	0.00	0.00	29.48
South West Acute Hospital	21.14	26.51	5.48	5.38
Waterside Hospital	0.00	0.00	0.00	0.00
<b>Western Health &amp; Social Care Trust</b>	<b>14.54</b>	<b>18.05</b>	<b>16.45</b>	<b>8.93</b>
<b>NI TOTAL</b>	<b>26.50</b>	<b>18.89</b>	<b>17.55</b>	<b>18.84</b>

**Table 5: Quarterly *C. difficile* reports in patients aged 2 years and over, by HSCT, Oct 2024 – Sep 2025.**

Trust	Oct-Dec 2024 Episodes	Jan-Mar 2025 Episodes	Apr-Jun 2025 Episodes	Jul-Sep 2025 Episodes
Belfast Health & Social Care Trust	37	24	27	38
Northern Health & Social Care Trust	13	6	15	14
South Eastern Health & Social Care Trust	26	19	8	11
Southern Health & Social Care Trust	25	18	13	12
Western Health & Social Care Trust	10	12	11	6
<b>NI TOTAL</b>	<b>111</b>	<b>79</b>	<b>74</b>	<b>81</b>
<b>NI community TOTAL</b>	<b>79</b>	<b>52</b>	<b>57</b>	<b>89</b>

\*Note: Rates displayed are per 100,000 occupied bed days.

Bed day data were not available for NHSCT, SHSCT and WHSCT - provisional figures were used this quarter (figures taken from Jul-Sep 2024).

## Appendix A

Table 6: Quarterly rates\* of *C. difficile* reports in patients aged 65 years and over, by hospital, Oct 2024 – Sep 2025.

Hospital	Oct-Dec 2024	Jan-Mar 2025	Apr-Jun 2025	Jul-Sep 2025
Belfast City Hospital	16.50	35.20	0.00	71.53
Mater Infirmorum	38.22	25.28	50.82	25.90
Musgrave Park Hospital	26.80	8.71	28.06	34.88
NICCO	180.34	0.00	0.00	53.50
Royal Group of Hospitals	30.06	14.67	27.90	43.28
<b>Belfast Health &amp; Social Care Trust</b>	<b>34.30</b>	<b>16.64</b>	<b>28.96</b>	<b>41.55</b>
Antrim Area Hospital	16.29	14.22	30.10	21.79
Causeway Hospital	24.59	0.00	24.15	23.59
Dalriada Hospital	0.00	0.00	0.00	0.00
Mid Ulster Hospital	0.00	0.00	0.00	0.00
Moyle Hospital	0.00	0.00	0.00	0.00
Robinson Memorial Hospital	69.40	0.00	0.00	0.00
Whiteabbey Hospital	0.00	69.11	0.00	0.00
<b>Northern Health &amp; Social Care Trust</b>	<b>18.09</b>	<b>10.71</b>	<b>24.01</b>	<b>19.31</b>
Ards Hospital	0.00	63.69	0.00	64.60
Downe Hospital	123.58	26.10	24.61	80.95
Lagan Valley Hospital	28.70	30.92	14.94	45.63
Ulster Hospital	49.67	33.71	10.91	8.19
<b>South Eastern Health &amp; Social Care Trust</b>	<b>51.39</b>	<b>33.71</b>	<b>12.20</b>	<b>20.63</b>
Craigavon Area Hospital	53.80	17.73	36.44	21.76
Daisy Hill Hospital	27.59	44.53	10.36	10.01
Lurgan Hospital	0.00	21.62	23.43	46.66
South Tyrone Hospital	63.29	28.28	0.00	0.00
<b>Southern Health &amp; Social Care Trust</b>	<b>43.13</b>	<b>25.22</b>	<b>26.76</b>	<b>19.85</b>
Altnagelvin Area Hospital	16.88	25.07	26.28	8.75
Omagh Hospital	0.00	0.00	0.00	29.90
South West Acute Hospital	21.67	25.45	7.13	7.12
Waterside Hospital	0.00	0.00	0.00	0.00
<b>Western Health &amp; Social Care Trust</b>	<b>15.61</b>	<b>21.34</b>	<b>15.98</b>	<b>9.00</b>
<b>NI TOTAL</b>	<b>32.78</b>	<b>21.10</b>	<b>22.22</b>	<b>23.86</b>

Table 7: Quarterly *C. difficile* reports in patients aged 65 years and over, by HSCT, Oct 2024 – Sep 2025.

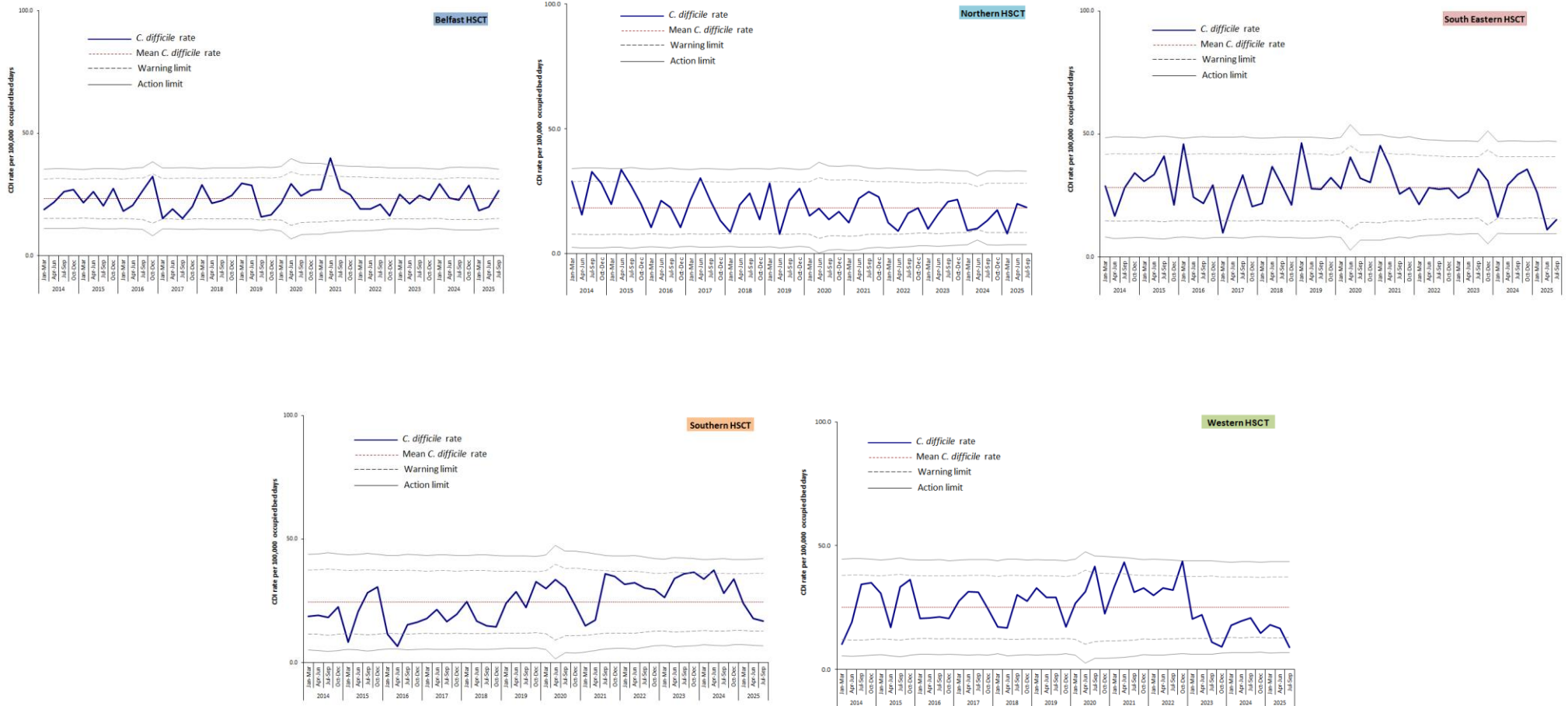
Trust	Oct-Dec 2024 Episodes	Jan-Mar 2025 Episodes	Apr-Jun 2025 Episodes	Jul-Sep 2025 Episodes
Belfast Health & Social Care Trust	26	12	20	29
Northern Health & Social Care Trust	9	5	12	10
South Eastern Health & Social Care Trust	25	16	6	10
Southern Health & Social Care Trust	20	12	12	9
Western Health & Social Care Trust	7	10	7	4
<b>NI TOTAL</b>	<b>87</b>	<b>55</b>	<b>57</b>	<b>62</b>
<b>NI community TOTAL</b>	<b>64</b>	<b>47</b>	<b>41</b>	<b>70</b>

\*Note: Rates displayed are per 100,000 occupied bed days.

Bed day data for patients aged 65 years and over were not available for NHSCT, SHSCT and WHSCT - provisional figures were used this quarter (figures taken from Jul-Sep 2024).

## Appendix B

### Trends in *C. difficile* rates in inpatients aged 2 years and over, by HSCT and quarter, 2014 – 2025



## Appendix C

**Table 8: *C. difficile* reports among inpatients\* in Northern Ireland aged 2 years and over, by financial year and HSCT**

HSCT	2018/19	2019/20	2020/21	2021/22	2022/23	2023/24*	2024/25*
Belfast	132	106	101	128	107	136	121
Northern	57	47	34	52	37	49	39
South Eastern	82	72	76	69	75	72	90
Southern	43	71	50	74	80	99	90
Western	65	63	66	80	81	39	49
Northern Ireland	<b>379</b>	<b>359</b>	<b>327</b>	<b>403</b>	<b>380</b>	<b>395</b>	<b>389</b>

**Table 9: *C. difficile* reports among inpatients\* in Northern Ireland aged 65 years and over, by financial year and HSCT**

HSCT	2018/19	2019/20	2020/21	2021/22	2022/23	2023/24*	2024/25*
Belfast	98	80	80	84	78	96	78
Northern	48	39	27	39	31	43	32
South Eastern	67	68	68	60	66	63	83
Southern	32	57	37	56	63	78	66
Western	41	45	51	58	66	30	40
Northern Ireland	<b>286</b>	<b>289</b>	<b>263</b>	<b>297</b>	<b>304</b>	<b>310</b>	<b>299</b>

\*“Inpatient episodes” for 2023/24 and 2024/25 include all patients categorised as hospital in-patient and ED patients with a positive specimen taken  $\geq$  2 days after the decision to admit date. Previous years include inpatients only.