

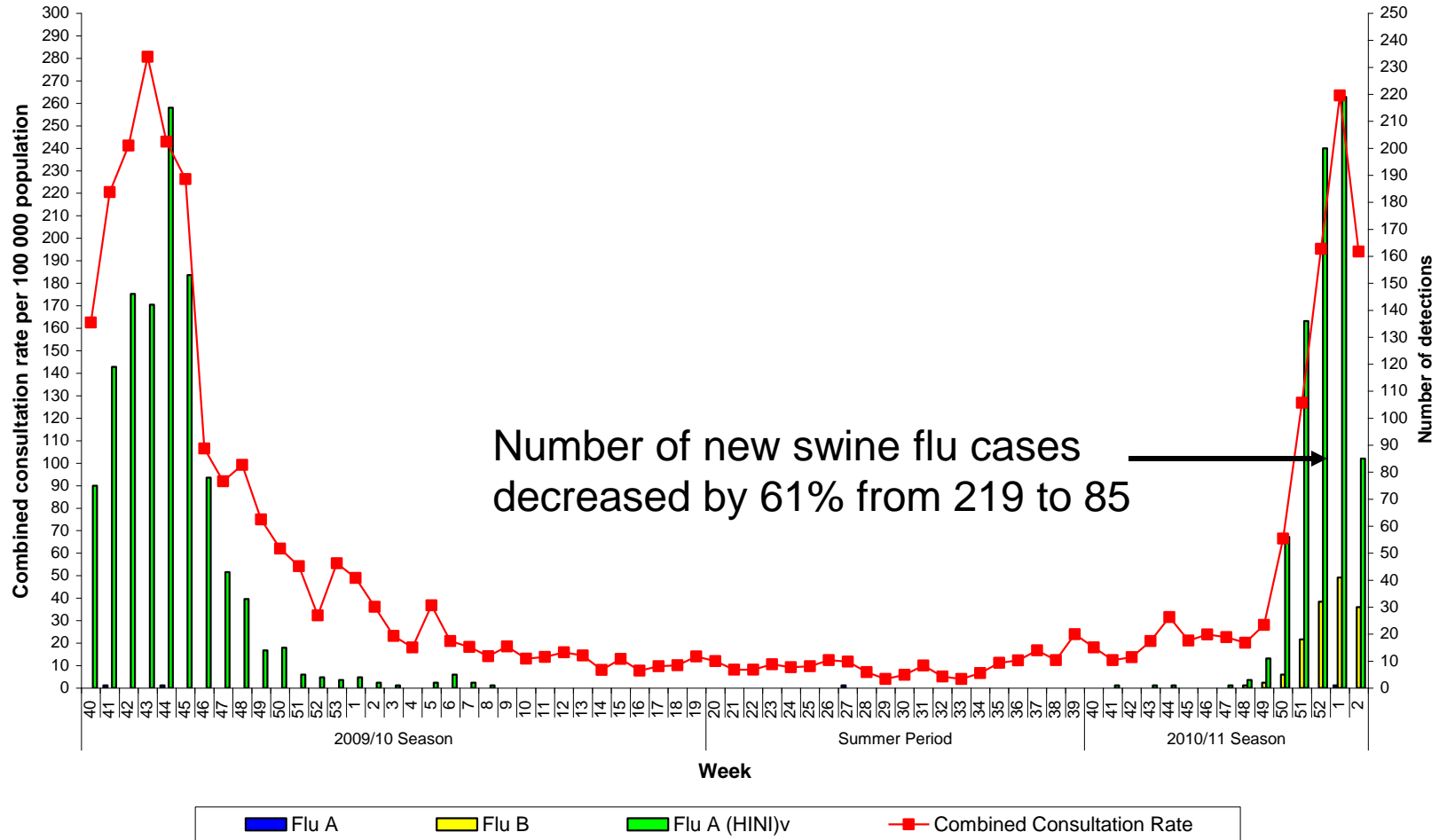
Swine Flu Briefing

20 January 2011

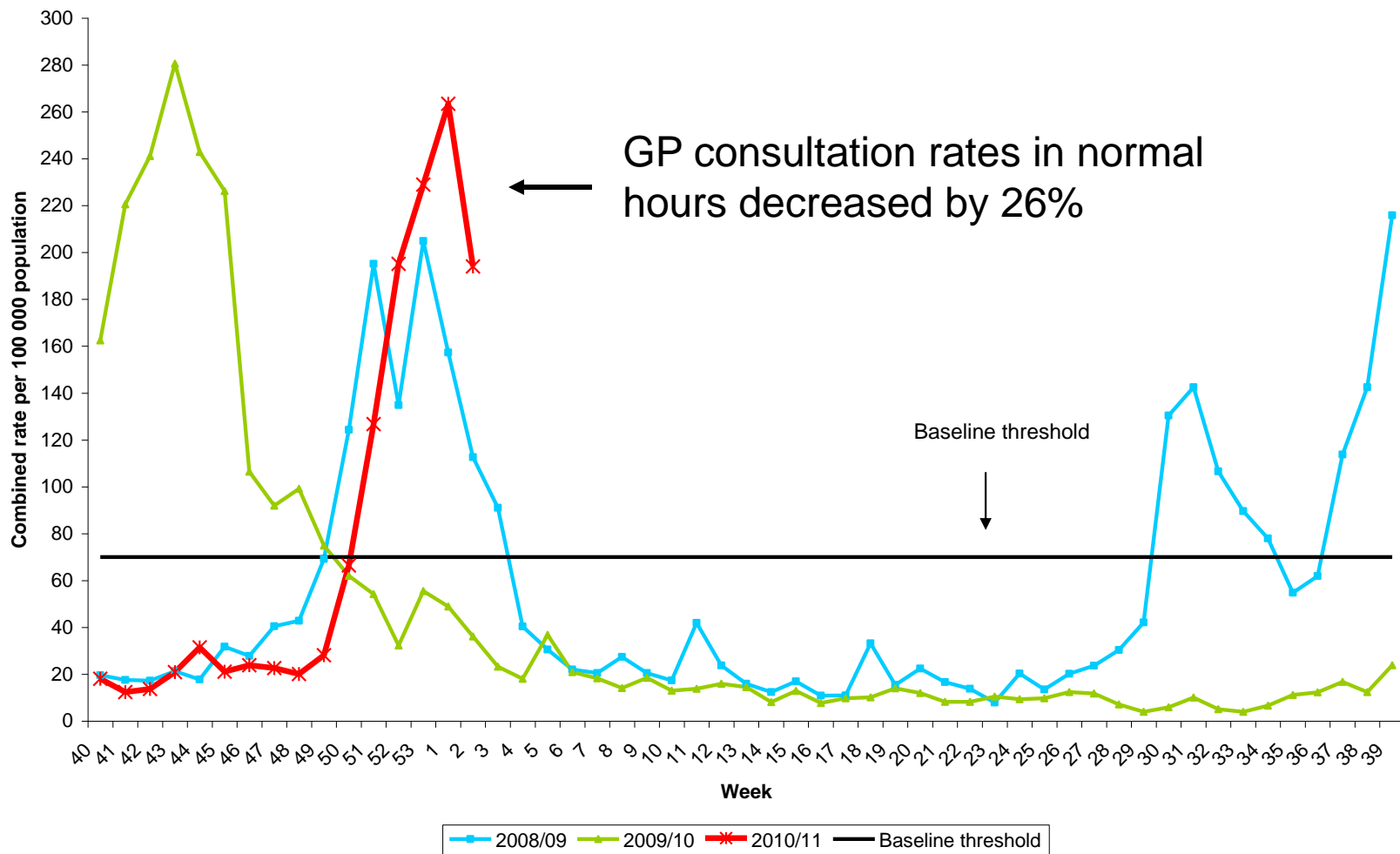
Overview

- Pattern of flu in Northern Ireland
- Updated swine flu deaths
- Vaccine availability

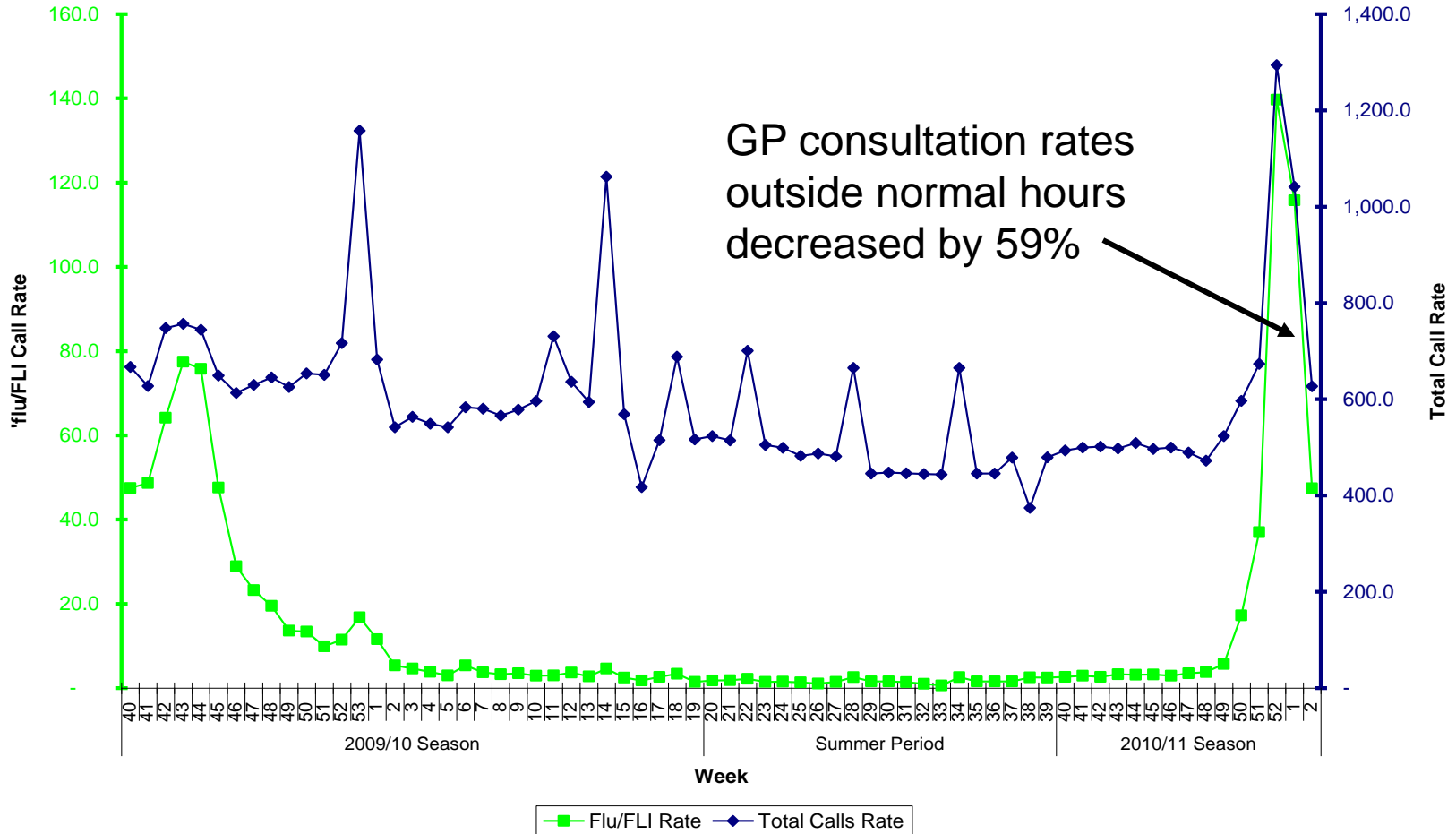
Number of New Flu Cases



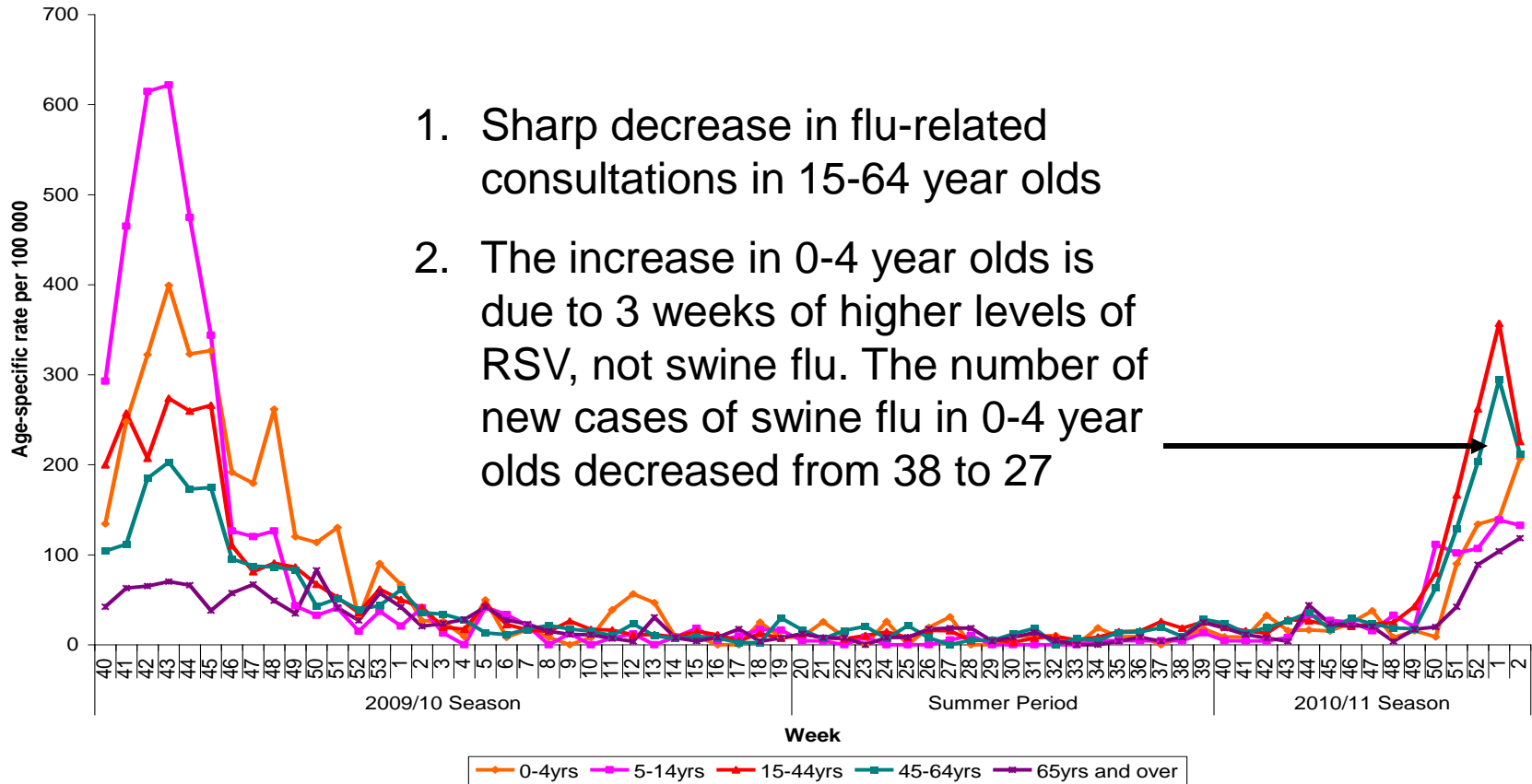
GP Consultation Rates for Flu & Flu-like Illness



GP Consultation Rates for Flu & Flu-like Illness Outside Normal Hours

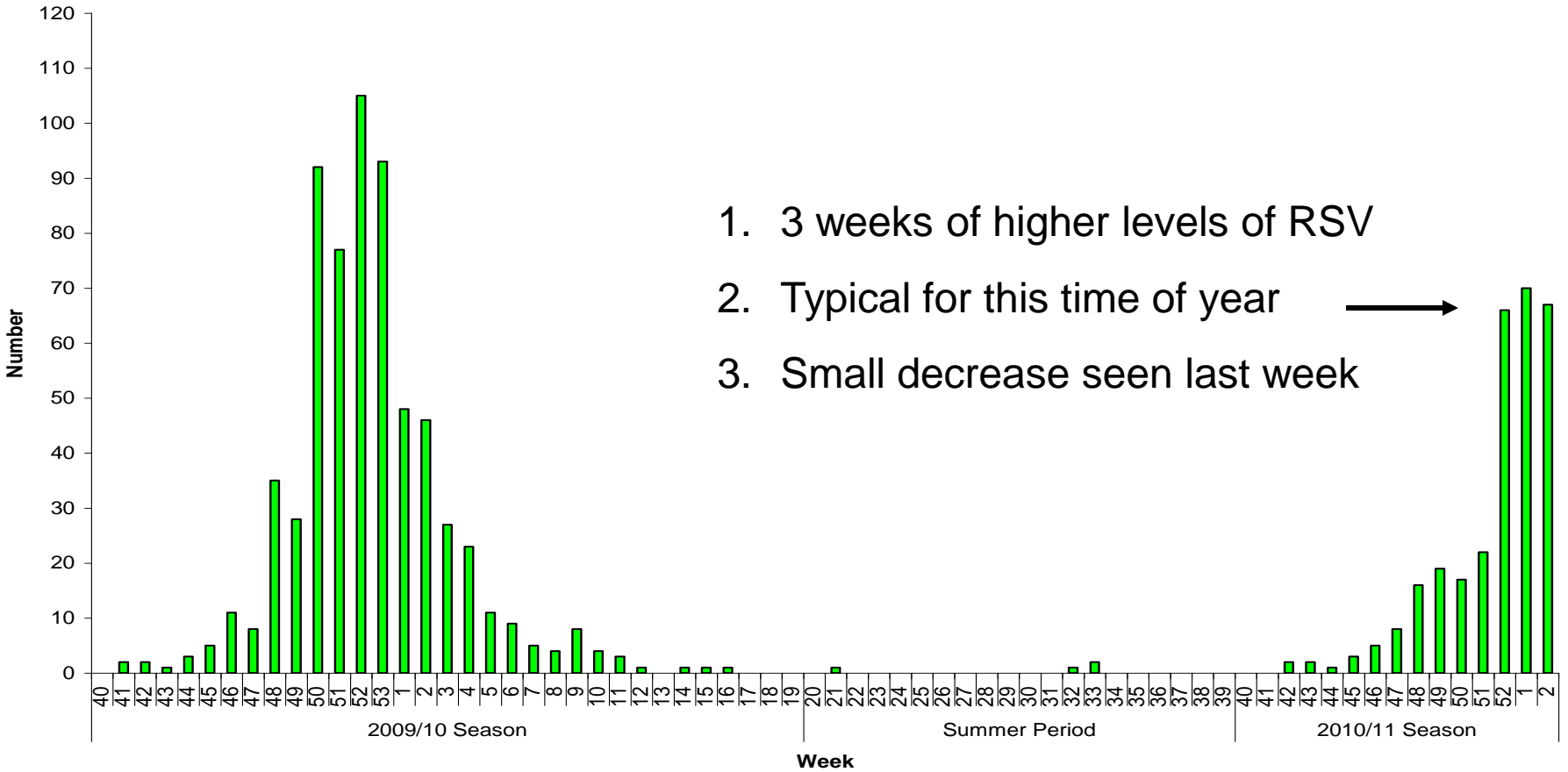


GP Consultation Rates for all Flu & Flu-like Illness by Age



1. Sharp decrease in flu-related consultations in 15-64 year olds
2. The increase in 0-4 year olds is due to 3 weeks of higher levels of RSV, not swine flu. The number of new cases of swine flu in 0-4 year olds decreased from 38 to 27

Weekly Cases of RSV Viruses

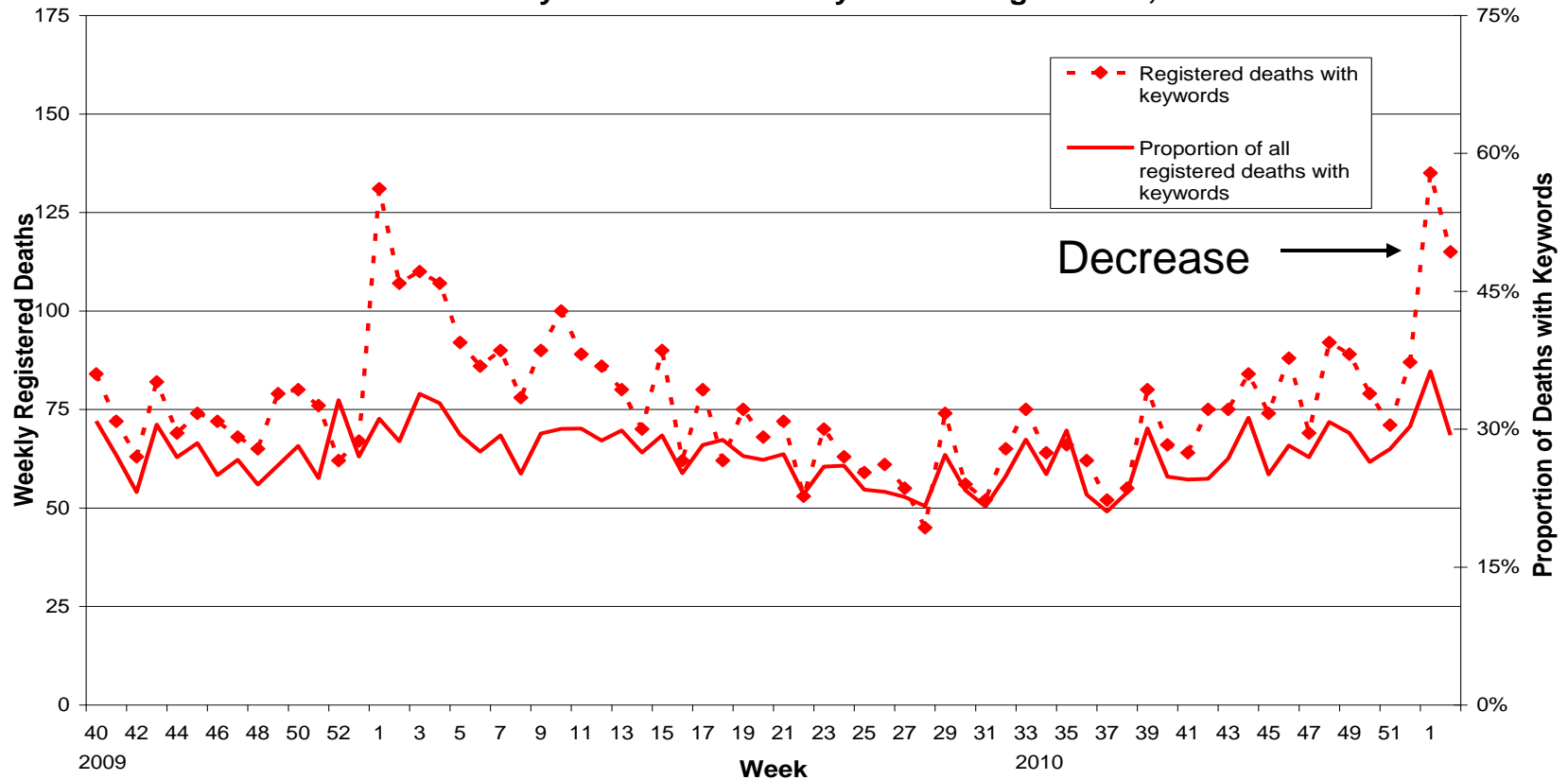


1. 3 weeks of higher levels of RSV
2. Typical for this time of year
3. Small decrease seen last week



Registered Deaths from Selected Respiratory Infections

Deaths due to influenza, bronchitis, bronchiolitis, pneumonia and proportion of all deaths with keywords mentioned by week of registration, 2009-10



NI Deaths Reported to UK

- PHA Flu Bulletin Week 2 (Saturday 8 Jan 2011 to Friday 14 Jan 2011)
 - 1 swine flu death in that time period

Total Swine Flu Deaths at Noon Wed 19 Jan 2011

	This yr	Last yr	Total	%Total Deaths*
Person had an underlying condition	18	18	36	92%
Person did not have an underlying condition	2	1	3	8%
Not confirmed	1	0	1	N/A
Total	21	19	40	

* % of Total swine flu deaths for this year and last year where information on underlying conditions has been confirmed

Summary Messages 20 Jan 2011

- If the current trend continues, the peak of this year's flu season has passed
- Consultation rates, new cases, and registered deaths from selected respiratory infections have all decreased
- We expect to see further swine flu related deaths, but it's reassuring that the level of new flu cases is decreasing
- People with underlying conditions remain at much greater risk
- People without underlying conditions can also be affected

Vaccine Availability

- Sufficient vaccine to protect all at-risk people from swine flu
- 414,000 flu vaccine doses already distributed to GPs and Trusts with sufficient swine flu vaccine available for any remaining at-risk patients
- GPs will continue to use the seasonal flu vaccine that they may still have
- Further demand will be met from the swine flu vaccine supplies