

# **Developments in Early Intervention in Northern Ireland.**

**Presentation to Early Years Interventions  
Conference 31<sup>st</sup> May 2011.**

**Fionnuala McAndrew,  
Director, Social Care and Children  
Health and Social Care Board**



**Health and Social  
Care Board**

# Early Intervention in Context

- The value of early Intervention is increasingly recognised internationally, within the UK and in NI
- Early intervention = intervention at an early age and at an early stage of difficulties
- Early intervention requires a coordinated approach, if it to work for families, communities and make best use of scarce resources.

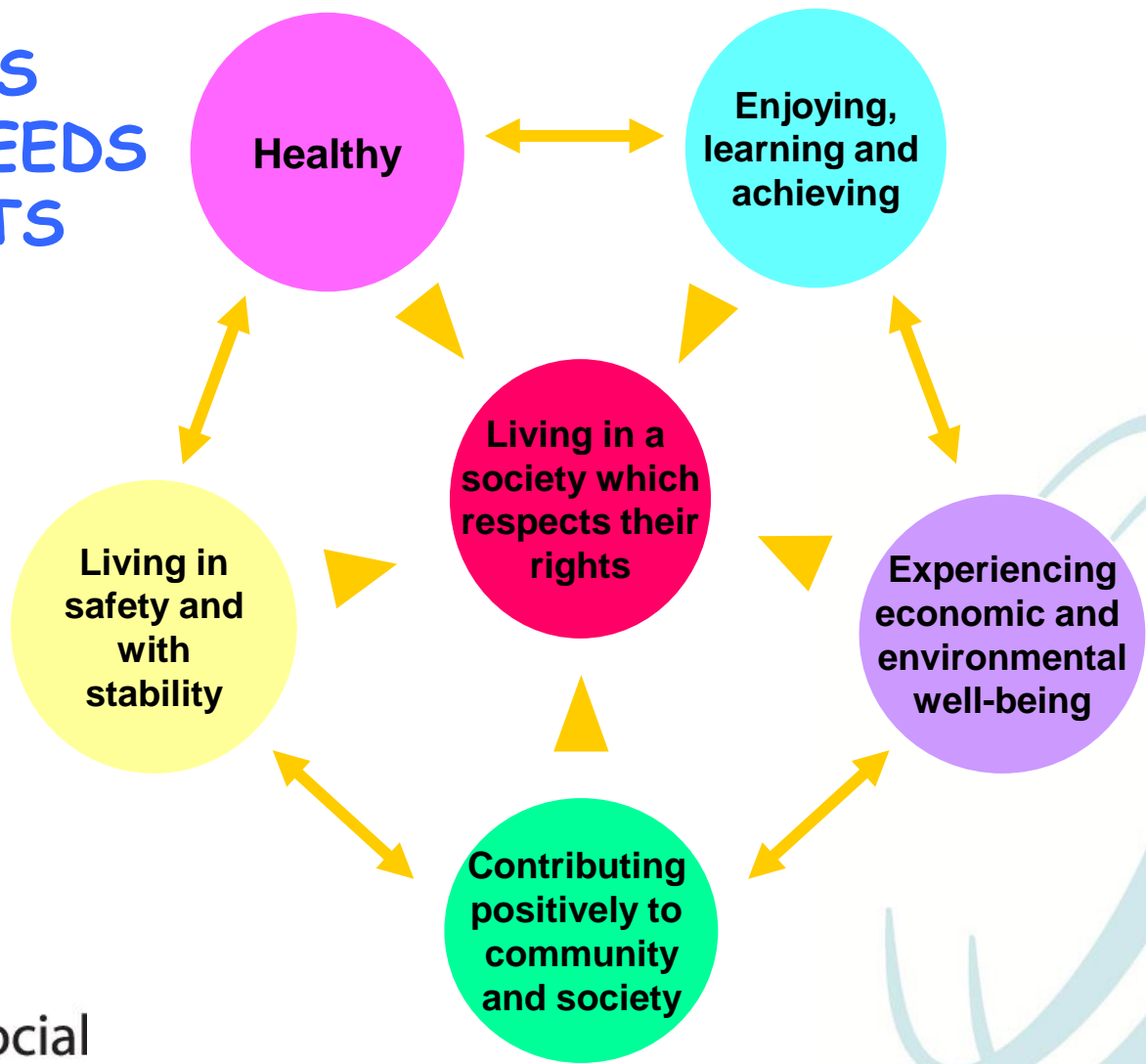


# A Shared vision – Outcomes for children

**a strategy for children and young people, which includes six high level outcomes, which make sense to representatives across a wide range of agencies.**



# OUTCOMES BASED ON NEEDS AND RIGHTS



# Families Matter

“Family Support is defined as the provision of a range of supports and services to ensure that all children and young people are given the opportunity to develop to their full potential. It aims to support their development primarily by supporting and empowering families and strengthening communities. Its focus is on early intervention, ensuring that appropriate assistance is available to families at the earliest opportunity at all levels of need”

Families Matter: Supporting Families in Northern Ireland  
(DHSS&PS 2009)



Health and Social  
Care Board

# Article 18 UNCRC

- “For the purpose of guaranteeing and promoting the rights set forth in the present convention, State parties shall render appropriate assistance to parents and legal guardians in the performance of their child rearing responsibilities and shall ensure the development of institutions, facilities and services for the care of children”





# Northern Ireland Family Support Model

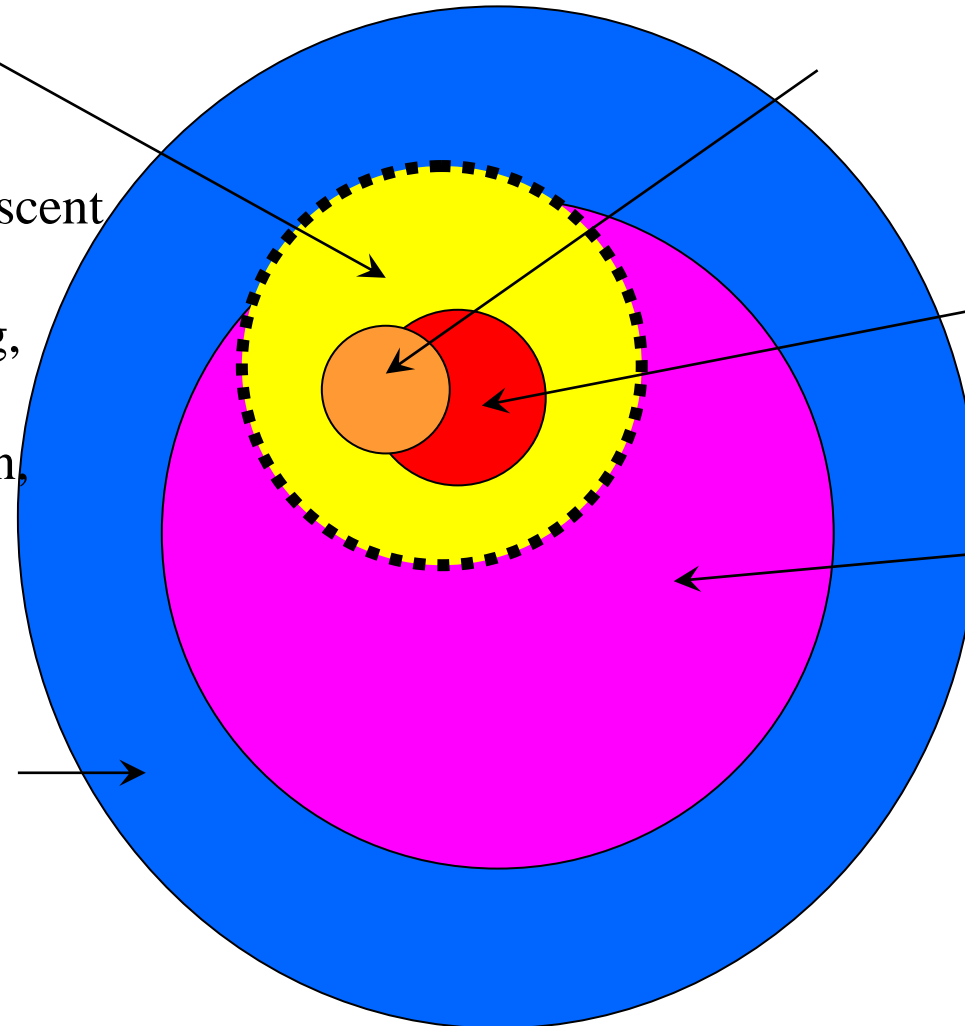
**Children in Need**

**Children on  
Child Protection Register**

**Children  
Looked After**

**Children who  
are Vulnerable**

**Total  
Population  
of Children and  
Young People**



*Including:*

- Disability,
- Child and Adolescent Mental Health,
- Youth Offending,
- Homelessness,
- School Exclusion,
- Care Leavers

*For example:*

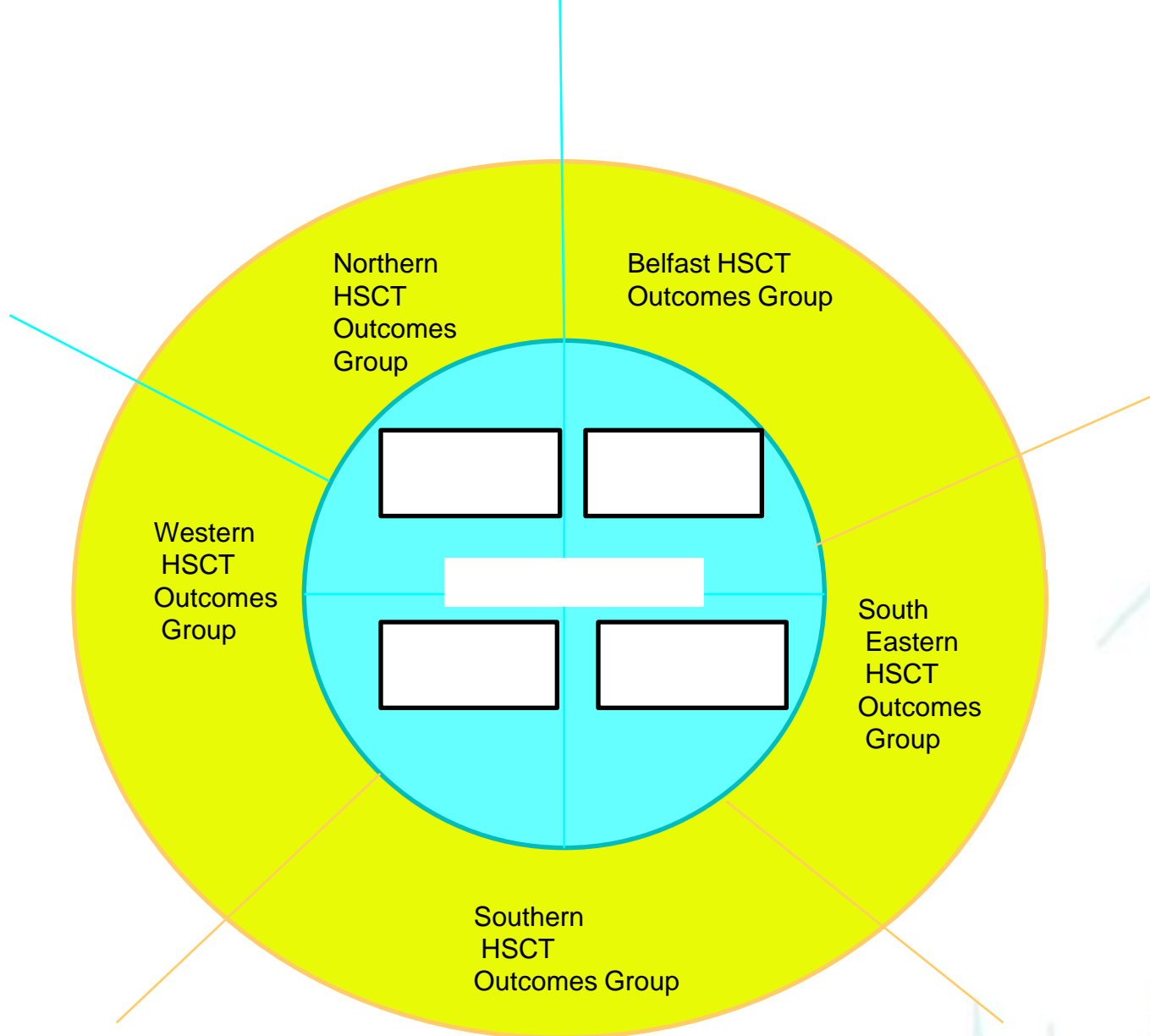
- Behaviour Support,
- Parenting Support Programmes,
- Social Excluded Communities (e.g. Travellers)

# We have information on Outcomes -

- We have information.....
- Related to Government outcomes for children and young people.
- We have built in rights to the indicators as well as needs.





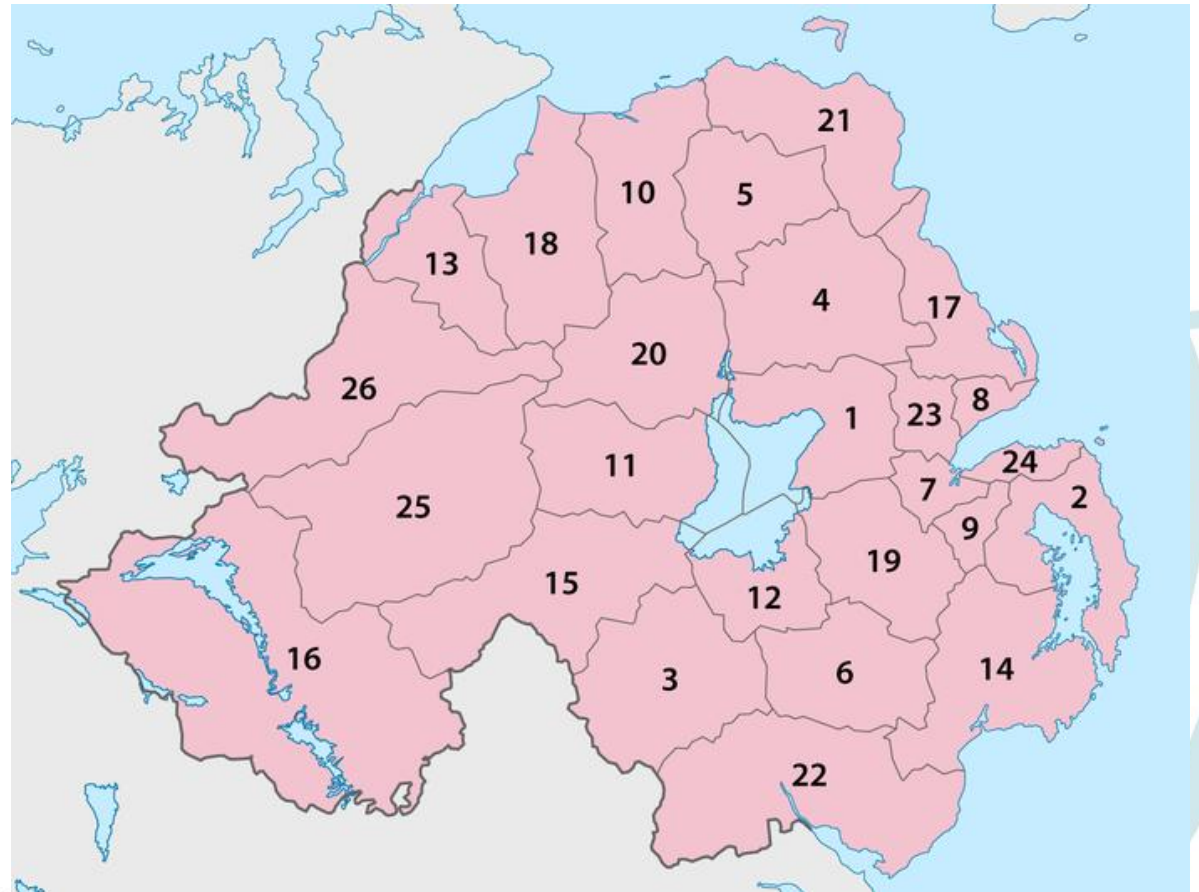


Health and Social  
Care Board

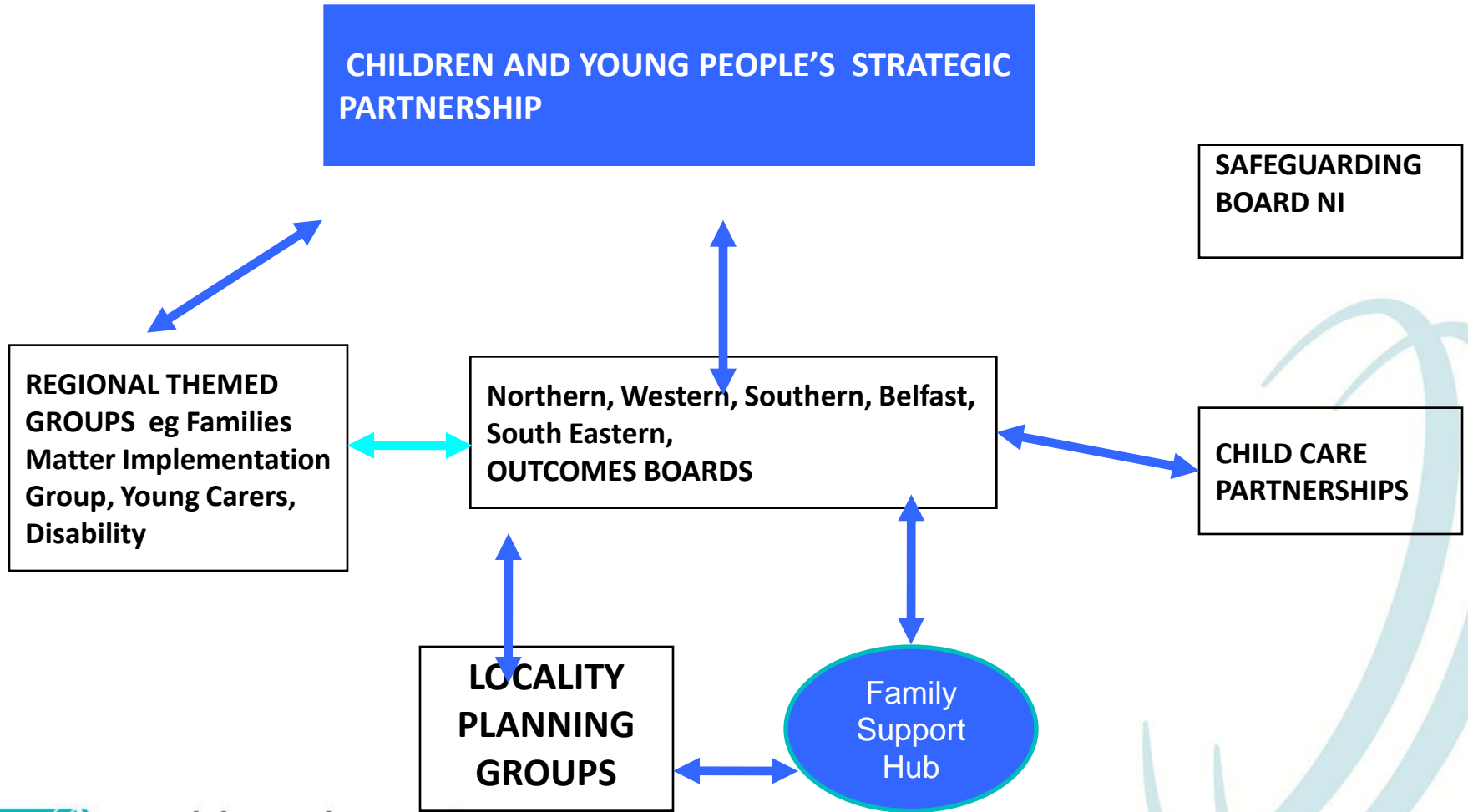


# Integrated planning and commissioning – led by Children and Young People’s Strategic Partnership at Northern Ireland level - and

through locality planning groups - bringing together children and young people, families and agencies.



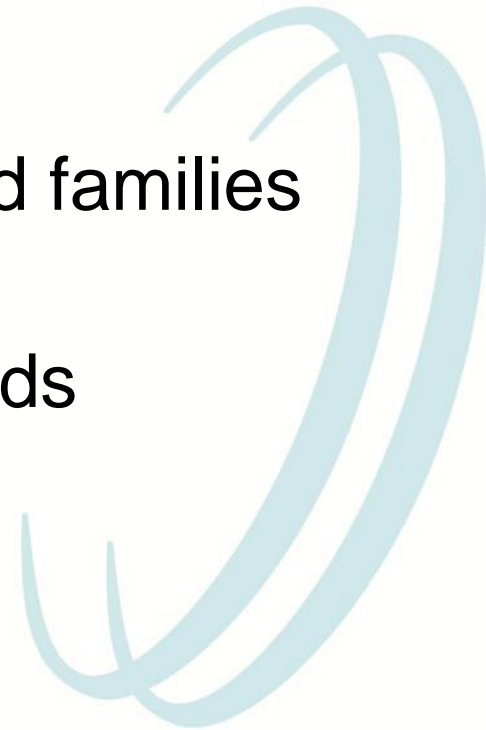
# Structures and Links



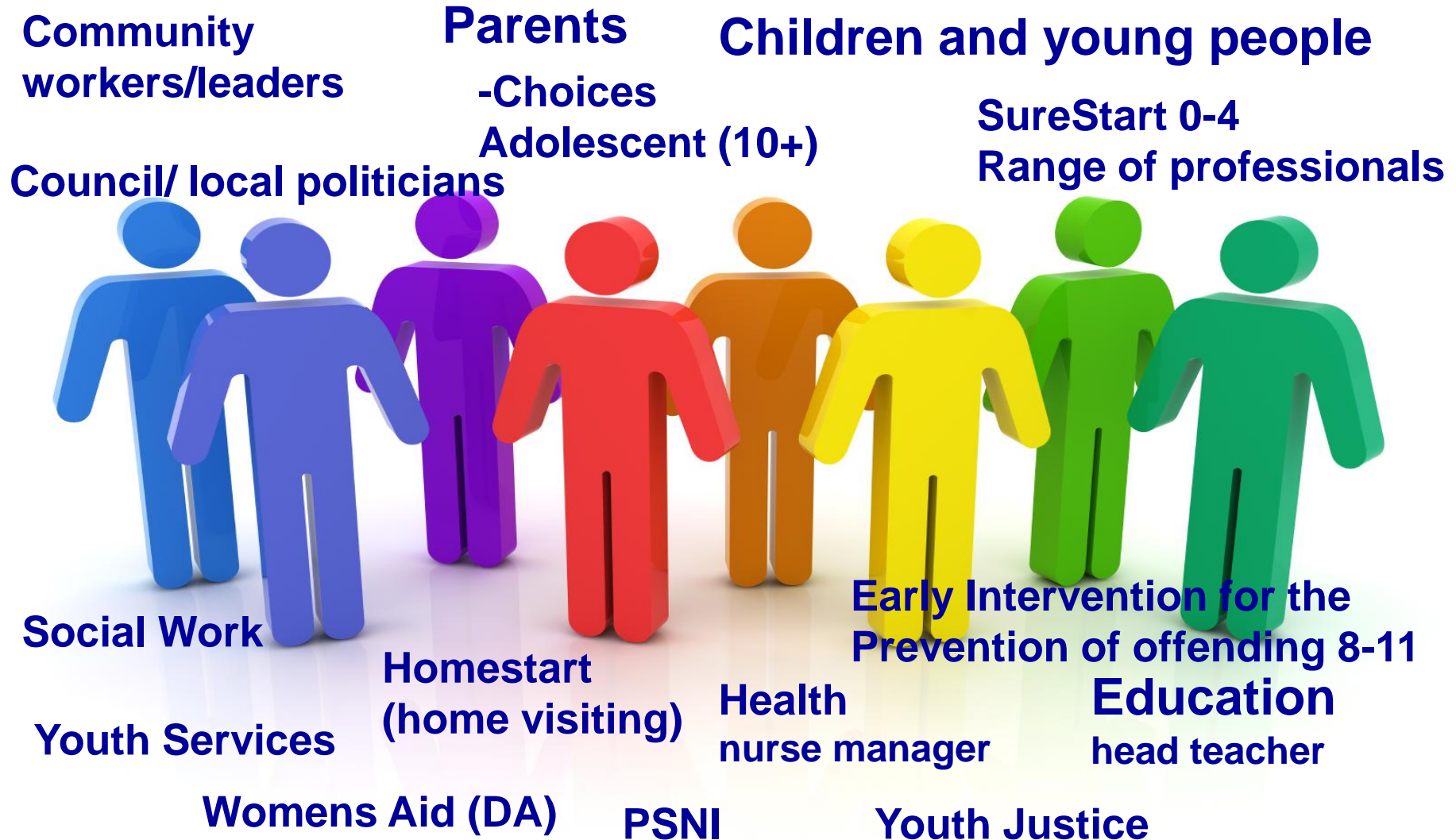
# Purpose of Locality planning

To improve outcomes for children and young people and families in an area by:

- Establishing a local partnership
- Building on existing social networks
- Developing community ownership
- Listening to children young people and families and
- Developing services to meet their needs



# Who – partnership statutory voluntary and community family support service providers



# What is Needed to make Locality Planning Work Well

Communities bring;-

- Commitment
- Ownership
- Passion
- Local knowledge
- Opportunity to achieve early intervention
- Effective involvement of children young people and families
- Bottom up



Agencies bring;-

- Support to meet and plan
- Tools -Outcomes based model – indicators
- Family support model
- Whole Child model
- Strategic influence
- Top down support
- Family Support Database
- Funding

**Outcomes analysis**  
**+ local knowledge**  
**+ input children/young people**  
**•LOCAL PLAN linked to Children and Young People’s Plan setting out service development and actions**



FROM CO-ORDINATION OF  
PLANNING  
EFFORTS



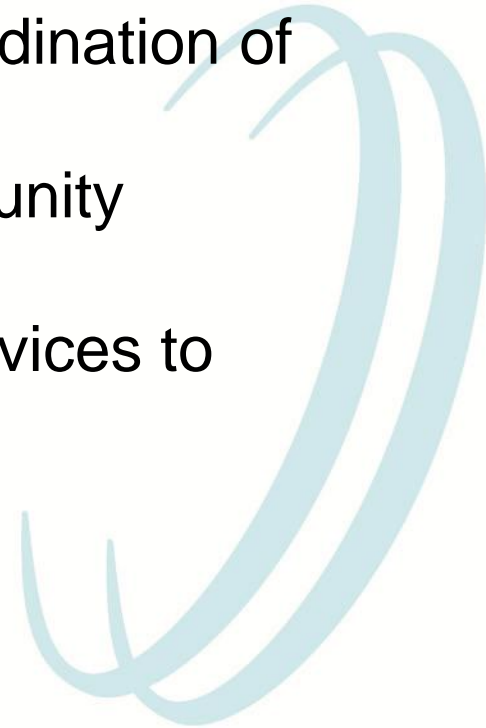
TO

CO-ORDINATION OF  
INDIVIDUAL FAMILY NEEDS



# What is a Family Support Hub

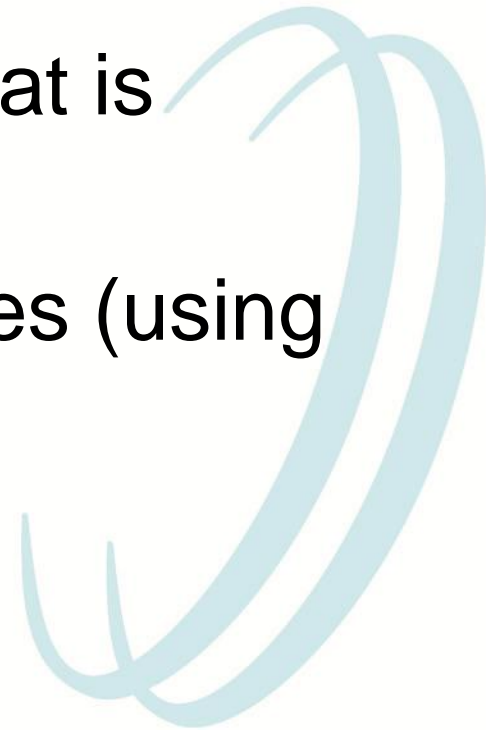
- A network of agencies (voluntary/community and statutory) who work directly with parents and children in a local area
- Engages with families who do not meet the threshold for statutory social work support
- Aims to avoid duplication and improve coordination of service delivery to individual families
- Draws on expertise of voluntary and community organisations
- Develop clear links with statutory social services to manage child protection concerns





# What Hubs will do

- Provide early intervention family support services to vulnerable families and children aged 0-18
- Type of services depends on what is available in local area
- Signpost families to other services (using Family Support Database)



# Continuum of Support



Health and Social  
Care Board





## NEWS & EVENTS

22 May 2010

New government guidelines for child services coming soon...

18 May 2010

SureStart Summer Scheme Initiative gaining momentum...

[More News & Events](#)

## Family Support Services Directory

Welcome to the Northern Ireland Family Support Services Directory.

This directory provides details of a wide range of services offering support to families across Northern Ireland.

It brings together comprehensive and up-to-date information about services for children, young people, their parents and carers.



SEARCH DATABASE

Choose a service



OR Keyword Search

Select district council



SEARCH

A - Z SERVICE DIRECTORY

[A](#) [B](#) [C](#) [D](#) [E](#) [F](#) [G](#) [H](#) [I](#) [J](#) [K](#) [L](#) [M](#) [N](#) [O](#) [P](#) [Q](#) [R](#) [S](#) [T](#) [U](#) [V](#) [W](#) [X](#) [Y](#) [Z](#)

### Telephone Helpdesk

Talk to us now for help & advice...



### Challenging Behaviour Courses

Click here to register...



### Training Courses..



### SureStart Summer Schemes

Find out what's going on in your area...

**SureStart**



### Site Safe

All organisations in this directory have declared to HSCB that they have clear policy and procedures for Safeguarding children.

Get included in the Directory!

Department of Health,  
Social Services and Public Safety  
[www.dhespni.gov.uk](http://www.dhespni.gov.uk)

Health and Social Care  
[www.hscni.net](http://www.hscni.net)

# Key Messages

- Early years and early stage
- Planning universal and targeted services together – through a process which builds on agency and community strengths at all levels
- Focus on what works – support nearest the family – Family Support Hubs.

# Evaluating Family Support



# Evidence Base

- **DOLAN P, PINKERTON J, CANAVAN J eds; ' Family Support – From Description to Reflection' in 'Family Support as Reflective Practice' Jessica Kingsley 2006**
- **MORRISON T ; The Strategic Leadership of Complex Practice ; Opportunities and Challenges' ; Child Abuse Review Vol 19 ; 312 -329 (2010)**
- **GILLIGAN R; 'The Value of Resilience as a Key Concept in Evaluating Family Support' in 'Evaluating Family Support – Thinking Internationally, Thinking Critically' Katz and Pinkerton Eds, Wiley 2003**
- **MASTEN A, POWELL J; 'A Resilience Framework for Research, Policy and Practice' in 'Resilience and Vulnerability ; Adaptation in the Context of Childhood Adversities' Luthar S Ed ; Cambridge U P 2003**
- **RICHES K, ACTON M M, MOON G, GINNS H; ' Measuring Resilience in Childhood using data from the Tellus surveys' Research Policy and Planning 27(3)**
- **RUTTER M; 'Resilience, Competence and Coping' in Child Abuse and Neglect 31(3) 2007**
- **TURNRELL A, EDWARDS S; 'Signs of Safety A Solution and Safety Orientated Approach to Child Protection Casework' ; Norton 1999**
- **UNGAR Michael (2009); 'What is Resilience' Website of the Resilience Research Centre, Dalhousie University, Canada – [www.resilienceproject.org](http://www.resilienceproject.org)**

## Evidence base continued:-

- **The Harlem Children's Zone (HCZ), Harlem, NY, USA.** Fryer, R., and Dobbie, W. (2010). *Are High-Quality Schools Enough to Increase Achievement Among the Poor?* Evidence from the Harlem Children's Zone, Working Paper, Harvard University Department of Economics, New York.
- **Every Opportunity for Every Child.** Youth and Family Ministry Programme (2007) *Every Opportunity for Every Child 2007-2011*, Dutch Government, Netherlands
- **Croydon Total Place** Croydon Council (2010). *Child: Family: Place: Radical efficiency to improve outcomes for young children*, Croydon Council and NHS Croydon, UK.
- **Aked, J., Steuer, N., Lawlor E., and Spratt, S. (2009).** *Backing the Future report, why investing in children is good for us all*, Action for Children and New Economics Foundation, London
- **Heckman, J.J. (2006).** *'Investing in disadvantaged young children is an economically efficient policy'*. Paper presented at the forum on 'Building the economic case for investments in preschool', New York.
- **MUNRO E; The Munro Report of Child Protection – Interim Report 1; Crown copyright (2010)**
- **MUNRO E; The Munro Report of Child Protection – Interim Report 2; The Child's Journey ; Crown Copyright (2011)**
- **MUNRO E; The Munro Report of Child Protection – Final report; A Child- Centred System ; Crown Copyright (2011)**

# Evidence base continued;-

- **Early Intervention: The Next Steps** An Independent Report to Her Majesty's Government Graham Allen MP, 2001
- **Field, F. (2010), *The Foundation Years: preventing poor children becoming poor adults*** (available online at <http://webarchive.nationalarchives.gov.uk/20110120090128/http://povertyreview.independent.gov.uk/media/20254/poverty-report.pdf>).
- **Marmot, M. (2010), *Fair Society, Healthy Lives – A Strategic Review of Health Inequalities in England*** (available online at <http://www.marmotreview.org/AssetLibrary/pdfs/Reports/FairSocietyHealthyLives.pdf>)
- **Department for Children, Schools and Families (2008), *The Sure Start Journey: A Summary of Evidence*** available online at <http://www.education.gov.uk/publications/standard/Surestart/Page1/DCSF-00220-2008>
- **Tunstill, J. (2007), *Volunteers in Child Protection: A study and evaluation of CSV's pilot projects in Sunderland and Bromley – Executive Summary***, Community Service Volunteers (available online at <http://www.csv.org.uk/sites/default/files/ViCP%20Research%20-%20Executive%20Summary.pdf>)
- **Department for Education (2010), *Monitoring and evaluation of Family Intervention Projects to March 2010*** (available online at <http://www.education.gov.uk/rsgateway/DB/STR/d000956/index.shtml>)